

# 2019

**MOBILITY  
SOLUTIONS**



POWERSPORTS  
PERFORMANCE COMPONENTS



**MAGURA**





MAGURA has excelled as an acknowledged OEM leader for the global two-wheel industry for over 90 years, setting standards in safety, comfort and innovation. MAGURA is a pioneer in the world of hydraulics. It's no surprise to find long-established international companies such as BMW, KTM, Triumph, Ducati and many more turning to MAGURA when it comes to steering, brake and clutch products. MAGURA has been on board with BMW, for example, from their very first machine right through to the present day!

Improved safety and the development of innovative hydraulics technology have been the motivating forces driving the MAGURA brand for over nine decades. For high performance motor racing or everyday comfort – MAGURA makes an important contribution to ensuring that safety is a top priority for cyclists and MOTORCYCLE riders.





<b>HIGHLIGHTS 2019</b>	<b>6</b>
The Rok Bagoros X-line Special-Edition and HC <sup>3</sup> Black	6
<b>125 YEARS MAGURA</b>	<b>8</b>
<b>MAGURA HCT</b>	<b>12</b>
HC <sup>1</sup> Radial-Master	14
HC <sup>3</sup> Radial-Master	18
<b>HYDRAULIC MASTER CYLINDERS</b>	<b>22</b>
167 Hydraulic brake and clutch master cylinder	22
<b>MAGURA HYMEC</b>	<b>24</b>
HYMEC Off-Road and HYMEC On-Road	26
HYMEC replacement clutch slave cylinders	29
Build your own HYMEC clutch system	30
<b>MAGURA PERFORMANCE PARTS FOR BMW</b>	<b>32</b>
Replacement levers	34
BMW Upgrade Parts for R-Models	35
<b>X-LINE HANDLEBARS</b>	<b>36</b>
<b>CLASSICS</b>	<b>40</b>
73 Sport brake lever	42
73.202 Sport brake dual pull lever	42
74 Sport clutch lever	42
101 Clutch lever	43
108 Brake lever	43
12 Decompression lever	43
225 Hydraulic brake and clutch lever	43
233 Throttle twist grip with mechanical brake	44
273 Throttle twist grip with mechanical brake	44
307 Throttle twist grip	44
309 Throttle twist grip	44
314 Duo throttle twist grip	45
317 Electric throttle twist grip	45
700 Rear brake master cylinder	45
<b>MAGURA SPARE PARTS AND ACCESSORIES</b>	<b>46</b>
HC <sup>1</sup> spare parts and accessories	48
HC <sup>3</sup> spare parts and accessories	50
167 HYMEC spare parts and accessories	52
HYMEC for Harley spare parts	54
195 Radial master cylinder spare parts	55
167 Hydraulic master cylinder spare parts (brake/clutch)	56
190 Radial master cylinder spare parts	57
163 Hydraulic clutch master cylinder spare parts	58
750/770 Radial supermoto brake system spare parts	59
Accessoires	60

<b>LIQUI MOLY</b>	<b>64</b>
-------------------	-----------

All prices listed are recommended retail pricing valid from the 01.05.2018 and include 19% VAT.

Specifications are subject to change with prior notice

Pricing, delivery and other terms and conditions are those in effect at time of delivery.

Any and all riding stunts printed in this catalogue have been completed by professional riders in a controlled environment and are only possible with exceptional skill and experience combined with intensive training. Please do not under any circumstance attempt to replicate these actions!

# HIGH- LIGHTS



**THE ROK BAGOROS X-LINE SPECIAL-EDITION** –  
MORE STYLE AND MORE PERFORMANCE.  
THIS X-LINE HANDLEBAR HAS BEEN DEVELOPED TO-  
GETHER WITH THE INTERNATIONALLY RENOWNED  
STUNT RIDER ROK BAGOROS: THE SPECIAL EDITION  
VERSION IMPRESSES WITH IMPROVED ERGONOMICS  
AND EXCLUSIVE ROK-DESIGN! A TYPICAL MAGURA  
X-LINE HANDLEBAR AND STILL VERY MUCH UNIQUE!  
FOR MORE DETAILS SEE PAGE 38



**HC<sup>3</sup> BLACK** – PREMIUM GRADE ALUMINIUM ALLOY - ANODISED BLACK WITH RED FEATURES. THESE MASTER CYLINDERS ARE A HIGHLIGHT ON EVERY MOTORCYCLE AND IMPROVE THE PERFORMANCE OF THE CLUTCH AND BRAKE. DETAILS FROM PAGE 20.





125 YEARS

100

MAGURA PERFORMANCE COMPONENTS

# 125 YEARS OF MAGURA: A STORY OF SUCCESS

## SUCCESS FOR 125 YEARS

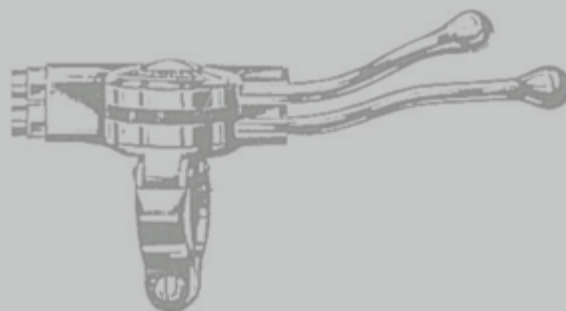
125 years of MAGURA History: from the gear rack, which still forms the main symbol in the company logo, to the production of modern electronic components and self-developed high tech composite materials. For decades MAGURA has proved itself to be a reliable and competent partner to the motorcycle and bicycle industry. In the last few years MAGURA has been more and more a propelling and innovative force in the area of electric mobility.

Gustav Magenwirth, born in 1866 in Bad Urach, would look back at these developments with a proud smile. He was renowned as a man who thought hard how best to improve designs and was well ahead of his time. He always placed great value on the flexibility of his company. To the very present day his flexibility remains as an important characteristic of MAGURA and a corner stone of the company's success.

Beginning as an apprentice and later working as an employee with Karl Benz the MAGURA founder went on to produce engines, hydraulic pumps, plastics, bicycle and motorcycle components. Gustav Magenwirth invented one of the milestones in the company history in the form of the straight cable activation lever for motorcycles, which led to the beginning of a cooperation which remains to this day with the BMW Motorrad division. The combination of tradition and progress is still evident to this very day and the once family home of the company founder is now used as the main company headquarters for the holding company MAGENWIRTH Technologies in Bad Urach.

Even when the company experienced hard times, particularly during the Great Depression in 1928 and in the years until the end of the Second World War, Magenwirth and his daughters Julie, Martha and Klara were always looking ahead. The following generation was marked by husbands and sons, men like Eugen Munz and Werner Auch, who forged the future progress of the company. The fourth generation of the family is now at the forefront in the form of Fabian Auch who is the great grandson of Gustav Magenwirth. MAGURA continues to look and think ahead: MAGURA Powersports concentrates on everything to do with steering, braking and clutch activation for first class performance according to the highest quality standards. Renowned as an innovative and creative think-tank MAGURA continue to delight customers with well-considered new solutions. In addition the co-operation and development work with several big players in the motorcycle industry leads to new benchmark products in terms of comfort, safety and control.

As a competent partner to the international motorcycle industry MAGURA has an excellent reputation. The company always keeps an eye on the market trends away from the OEM business and is also able to supply excellent products with great attention to detail for use in the high end customising scene.



1893  
2018





## PERFORMANCE RE-DEFINED

In 1957 MAGURA acquired a plastic injection moulding facility for the development of its own products and sophisticated design construction. Nowadays the MAGURA composite production takes place in a modern facility in Hülben, close to Bad Urach. A number of self-developed materials like Carbotecture® und Carbotecture SL® are used to manufacture high quality parts in the injection moulding factory. The neighbouring production facility in Hengen employs 130 workers who produce bicycle brakes, motorcycle components and industrial controls. The affiliated company Bebro electronics is also within a half hour drive from Bad Urach and delivers the technical know-how for electronic assemblies, devices and systems.

Currently MAGURA divides the business into four important domains: Bike, Powersports, Controls and Composite.

The MAGURA motorcycle componentry domain retains its advantage by consequently developing new innovative solutions. Increased safety, more comfort and constant improvements in performance characterise the products from MAGURA Powersports. All OEM and Aftermarket products from MAGURA have been known for decades to provide quality and pioneering technology. High performance master cylinders like HC3 and HC1 stand out with important technical features like the patented HCT primary seal or the advanced secondary seal technology. R&D departments from leading motorcycle manufacturers, race teams, custom shops, motorcycle dealers, accessory shops as well as specialised workshops and motorcycle riders – they all value MAGURA as a supplier of high end motorcycle components.





.....

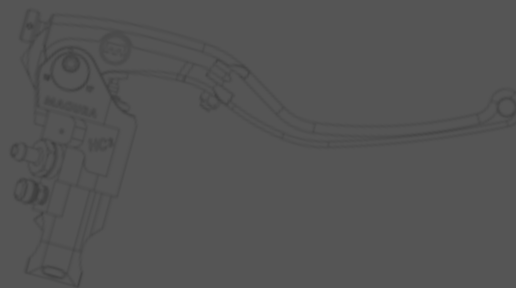
The bike domain at MAGURA has managed within the last 30 years to move from newcomer, with the invention of the first hydraulic bicycle brake systems in 1987, to technology leader within the bicycle component market. High-Tech-Componentry is manufactured from self-developed products and materials and the success of the MT-Series has been well proven as Test-Winner brake in various comparison tests. Innovative world firsts like the suspension fork eLECT or the first wireless adjustable seat post "VYRON" place MAGURA at the leading edge of new bicycle technologies.

The motorcycle and bicycle business has been expanding year on year at MAGURA. The sales through our associated companies in the USA and Asia ensure worldwide

availability of our products. MAGURA is also the service partner for Bosch E-Bike-Components and Drive units since the original market introduction. The long standing cooperation with Bosch led to the 2015 development of the first bicycle ABS Disk Brake which was introduced to the general public in 2017. Since that same year MAGURA has also been involved in a joint venture project with various renowned companies, such as ZF Friedrichshafen, to develop products and strategies to promote the E-Mobility market in the future.

The traditional company from Bad Urach looks back at 125 years of success. This company history is not only a good reason to celebrate the past but also an obligation to shape the future with confidence and spirit.

.....



THE RADIAL FAMILY

# HCT

POWERSPORTS  
TECHNOLOGY





# BRAKE AND CLUTCH LIKE A PRO

TWO VERSIONS OF THE BRAKE AND CLUTCH SYSTEMS BASED ON HCT TECHNOLOGY ARE CURRENTLY AVAILABLE. MAGURA OFFERS PERFECTION FOR ALL MOTORBIKE AFICIONADOS FROM COMFORT-ORIENTED TOURING RIDERS AND DISCERNING CUSTOM BIKE FANS TO RACING PROFESSIONALS.

The HCT patented MAGURA technology significantly improves the responsiveness of brake and clutch. Developed for the racetrack, the system inspires motorcycle professionals and recreational riders alike. In extreme conditions like racing, the novel "Advanced Seal Technology" prevents air from penetrating the hydraulic system. The HCT design diminishes internal friction, emphatically improving brake and clutch perfor-

mance. The HCT hydraulic system uses a slotted piston with a stationary primary seal. It is fully compatible with all brake systems, with or without ABS (as of Q3.2018). Damage caused by ABS kickbacks is also prevented. With its innovative HCT, MAGURA is once again setting the trends for comfort, safety and riding enjoyment.



POWERED WITH



HC<sup>1</sup> RADIAL  
MASTER CYLINDER

# 280 a

## STREET KING







#### **AT A GLANCE:**

- For superbikes, supermotos and road sports specialists
- Optimal lever kinematics
- Brake lever reach is individually adjustable
- Highest possible manufacturing quality
- Lever and cylinder parts are forged
- Direct pressure point
- Sensitive and powerful braking and clutch operation
- Space-saving design
- Unmatched price-performance ratio
- ABS-compatible
- Leading international stunt riders rely on the HC<sup>1</sup>

# THE COMPACT

# HCT1



OPTIMIZED REACH ADJUST

ADVANCED SEAL TECHNOLOGY

DOT **OR** MAGURA  
BLOOD (CLUTCH)

DOT (BRAKES)

EASY BLEED

EASY MOUNT

VARIOUS RESERVOIRS



IF YOUR OWN REQUIREMENTS IN DRIVING DYNAMICS, SAFETY AND COMFORT ARE MORE DEMANDING AND YOU WANT TO MAKE A GOOD BIKE EVEN BETTER, THEN IT'S TIME FOR THE NEW HC<sup>1</sup> FROM MAGURA. THE DECISION TO OPTIMISE YOUR OWN MOTORCYCLE IS MADE EASY BY THIS COMPACTLY-DESIGNED RADIAL FITMENT.

Every real fan of motorcycles will love the confidence-inspiring sensation of being able to brake and operate the clutch much more precisely, and the feeling of the strong, direct pressure point. We truly believe that you won't want to do without the performance of a MAGURA radial master cylinder once you've experienced it. Thanks to the pump's diagonal inclination, the HC<sup>1</sup> is also very easy to mount. Like all brand products from MAGURA, this ABS-compatible radial fitment stands out from the rest with its cutting-edge technology, sophisticated ergonomics and of course the outstanding MAGURA craftsmanship down to the last detail.

The HC<sup>1</sup> is supplied with a pre-mounted brake light switch and a compensating reservoir. Levers in two different lengths are available as spare parts, as well as various types of reservoir with matching holders and mirror mounting brackets.



#### HC<sup>1</sup> BRAKE MASTER

DESCRIPTION	ORDER CODE	RRP
HC <sup>1</sup> Brake Master Piston diameter 18 mm, long lever blade	2100453	309,95 €
HC <sup>1</sup> Brake Master Piston diameter 15 mm, long lever blade	2100451	309,95 €
HC <sup>1</sup> Brake Master Piston diameter 12 mm, short lever blade	2100452	309,95 €

#### HC<sup>1</sup> CLUTCH MASTER

DESCRIPTION	ORDER CODE	RRP
HC <sup>1</sup> Clutch Master Piston diameter 16 mm (for DOT), long lever blade	2100457	309,95 €
HC <sup>1</sup> Clutch Master Piston diameter 13 mm (for DOT), long lever blade	2100489	309,95 €
HC <sup>1</sup> Clutch Master Piston diameter 12 mm (for DOT), long lever blade	2100454	309,95 €
HC <sup>1</sup> Clutch Master Piston diameter 13 mm (for mineral oil*), long lever blade	2100456	309,95 €
HC <sup>1</sup> Clutch Master Piston diameter 12 mm (for mineral oil**), long lever blade	2100455	309,95 €

\* Suitable for use with BMW and KTM mineral oil clutch activation systems.

\*\* Suitable for MAGURA HYMEC applications.

#### OPTIONAL EXTRAS

(must be ordered separately)

- Short brake lever
- Mirror mount clamp
- Double banjo connector  
for 2 brake lines
- Radial adapter for HYMEC pressure line
- Various reservoir options
- HCT reservoir covers

 **SPARE PARTS AND ACCESSORIES**  
ON PAGES 48-49

#### ITEMS INCLUDED WITH DELIVERY

Every ready-to-mount HC<sup>1</sup> is delivered with these package contents:

- Banjo bolt with sealing rings (M10x1)
- Remote reservoir
- Standard clamp (without mirror mount)
- Brake light or start safety switch
- ABE for brake fitments
- Owner's Manual

The complete current ABE recommended fitment listing with additional models can be found available to download at [magura.com](http://magura.com)

IF YOUR MOTORCYCLE IS NOT LISTED IN OUR ABE YOU CAN SEND US DETAILS ON THE CURRENT MASTER CYLINDER USED ON YOUR MOTORCYCLE AND REQUEST A RECOMMENDATION FOR A REPLACEMENT OPTION. YOU CAN THEN ARRANGE AN APPOINTMENT WITH YOUR TECHNICAL SERVICE PARTNER AND REQUEST A SINGLE VEHICLE APPROVAL FOR THE UPGRADE PARTS.

HC<sup>3</sup> RADIAL  
MASTER CYLINDER

90°

TAKE THE LEAD







#### AT A GLANCE:

- For superbikes, supermotos and road sports specialists
- CNC-machined aluminium housing
- 90° radial design
- 3-way adjustable lever bearing point
- Folding lever
- Advanced Seal Technology
- Reservoir kit
- Titanium fixing screws
- ABS-compatible

# THE PROFESSIONAL

# HC3

APPROVED BY  
GRIP GIRLS RACING, YAMAHA KLEIN,  
SASCHA SCHODER, AARON COLTON,  
MATTIE GRIFFIN, MEDAZA CYCLES,  
MARKUS VOLZ, RAPTOR RACING,  
RACEFOXX AND RS RACING.





**MACHINED ALUMINIUM BODY** – this master cylinder body has been produced from high grade aluminium alloy to ensure a lightweight design combined with maximum rigidity which has been built to last.

**90° FULL RADIAL DESIGN** – Pushrod and cylinder at right angle to handlebar results in decreased friction and more direct brake feeling for improved control.

**FULL ABS COMPATIBILITY** – MAGURA “HCT” is approved for continuous use with all ABS systems without loss of performance due to pressure compensation (ABS-Kickback). (Status Q3.2018)

**3 WAY LEVER RATIO** – The hand activated master cylinder lever has a clever 3 way adjustable point of support. This mimics the effect of using a piston size 1 mm below and above the selected hydraulic ratio. Simply remove and reposition the lever support retaining bolt for a softer or harder pressure point. All 3 positions offer 90° full radial activation.

**FOLDING LEVER BLADE** – Reduces the force exerted on the master cylinder body in the event of a fall over. This will increase the possibility to continue riding following a fall over incident.

**ADVANCED SECONDARY SEAL TECHNOLOGY** – The rear piston seal has been specially designed to prevent the introduction of air through secondary seal ingress. The advanced X-Ring seal design will reduce or eliminate this problem common on racing motorcycles at higher RPM.

**RESERVOIR MOUNT** – The master cylinder is supplied with an external reservoir and mounting bracket designed to use minimum space and with smoked glass to optically determine the level and condition of the brake fluid at all times.

**TITANIUM RETAINING BOLTS** – Lever and clamp retaining bolts are high grade titanium saving weight while remaining strong and durable.



#### HC<sup>3</sup> BRAKE MASTER

MODEL	COLOUR	ORDER CODE	RRP
HC <sup>3</sup> Brake Master Piston diameter 18 mm = 17 to 19 mm (fully ABE approved)	Black Gold	2100691 2100299	799,95 € 799,95 €
HC <sup>3</sup> Brake Master Piston diameter 15 mm = 14 to 16 mm (fully ABE approved)	Black Gold	2100689 2100297	799,95 € 799,95 €
HC <sup>3</sup> Brake Master Piston diameter 12 mm = 11 to 13 mm, short lever blade, without switch and ABE (race version)	Black Gold	2100690 2100298	799,95 € 799,95 €

#### HC<sup>3</sup> CLUTCH MASTER

MODEL	COLOUR	ORDER CODE	RRP
HC <sup>3</sup> Clutch Master Piston diameter 15 mm = 14 to 16 mm (for brake fluid use - DOT)	Black Gold	2100692 2100300	799,95 € 799,95 €
HC <sup>3</sup> Clutch Master Piston diameter 12 mm = 11 - 13 mm (for mineral oil use*)	Black Gold	2100693 2100301	799,95 € 799,95 €


\* Suitable for use with BMW and KTM mineral oil clutch activation systems  
Suitable for use with MAGURA HYMEC applications

#### OPTIONAL EXTRAS

(must be ordered separately)

- Short fold lever\*
- Mirror mount clamp
- Remote lever adjuster
- Double banjo connector for 2 brake lines
- Radial adapter for HYMEC pressure line
- HCT reservoir covers

\* Standard equipment on 12 mm HC<sup>3</sup> Brake Master for racing

 **SPARE PARTS AND ACCESSORIES**  
ON PAGES 50-51

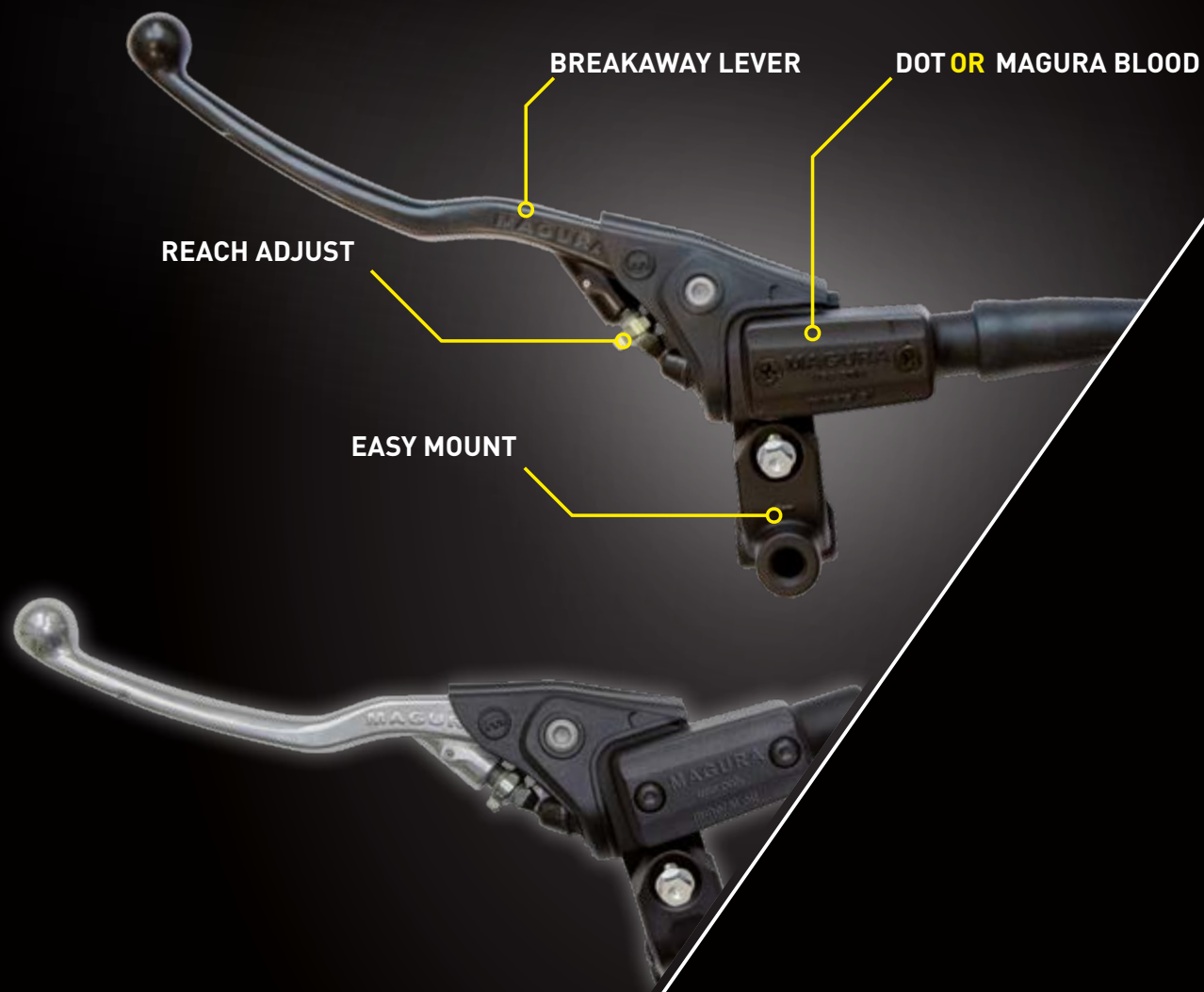
#### DELIVERY INCLUDES

Each HC<sup>3</sup> master cylinder comes ready to install and delivery includes:

- 3 Way Lever Ratio (mimics ±1mm hydraulic ratio adjustment)
- Banjo Connector with sealing rings
- Remote Reservoir
- Standard Clamp (without mirror mount)
- Pre-Installed Switch (for brake or clutch activation)
- ABE (German TÜV Approval) for Ø 15 mm and Ø 18 mm brake master
- Owner's Manual

The complete current ABE recommended fitment listing with additional models can be found available to download at [magura.com](http://magura.com)

IF YOUR MOTORCYCLE IS NOT LISTED IN OUR ABE YOU CAN SEND US DETAILS ON THE CURRENT MASTER CYLINDER USED ON YOUR MOTORCYCLE AND REQUEST A RECOMMENDATION FOR A REPLACEMENT OPTION. YOU CAN THEN ARRANGE AN APPOINTMENT WITH YOUR TECHNICAL SERVICE PARTNER AND REQUEST A SINGLE VEHICLE APPROVAL FOR THE UPGRADE PARTS.



**MASTERS**  
QUALITY MADE  
IN GERMANY



## 167 HYDRAULIC BRAKE AND CLUTCH MASTER CYLINDER

Hydraulic brake and clutch control, one piece aluminium cylinder with reservoir, forged and break-optimised alloy lever blade, improved reach adjust, easy to fit with a folding clamp, the compact construction avoids collisions when riding extreme off road. The cylinder and lever blade pivot are protected against the elements with a rubber cap. Available for use with mineral oil or brake fluid.

MODEL	PISTON-Ø IN MM	MEDIUM	DESCRIPTION/APPLICATION	ORDER CODE	RRP
<b>CLUTCH MASTER</b>					
Clutch Master 167.2 ls	9,5	Mineral oil	Black Off-Road Master cylinder, silver lever blade 123 mm without deco lever, clutch switch or mirror-mounting bracket	2701581	149,95 €
Clutch Master 167.1 ls	10,5	Mineral oil	Black Off-Road Master cylinder, silver lever blade 123 mm without deco lever, clutch switch or mirror-mounting bracket	2701582	149,95 €
Clutch Master 167.2 ls	9,5	DOT4/5.1	Black Off-Road Master cylinder, silver lever blade 123 mm without deco lever, clutch switch or mirror-mounting bracket	2701583	149,95 €
Clutch Master 167.1 ls	10,5	DOT4/5.1	Black Off-Road Master cylinder, silver lever blade 123 mm without deco lever, clutch switch or mirror-mounting bracket	2701584	149,95 €
Clutch Master 167.2 ls	9,5	Mineral oil	Black Off-Road Master cylinder, silver lever blade 146 mm, deco lever, clutch switch, mirror-mounting bracket	2700183	210,15 €
Clutch Master 167.1 ls	10,5	Mineral oil	Black Off-Road Master cylinder, silver lever blade 146 mm, deco lever, clutch switch, mirror-mounting bracket	2700186	210,15 €
Clutch Master 167.2 ls	9,5	DOT4/5.1	Black Off-Road Master cylinder, silver lever blade 146 mm, deco lever, clutch switch, mirror-mounting bracket	2700184	210,15 €
Clutch Master 167.1 ls	10,5	DOT4/5.1	Black Off-Road Master cylinder, silver lever blade 146 mm, deco lever, clutch switch, mirror-mounting bracket	2700187	210,15 €
Clutch Master 167.2 ls	9,5	Mineral oil	Black Street Master cylinder, black lever blade 163 mm, deco lever, clutch switch, mirror-mounting bracket	0723295	196,65 €
Clutch Master 167.1 ls	10,5	Mineral oil	Black Street Master cylinder, black lever blade 163 mm, deco lever, clutch switch, mirror-mounting bracket	2700185	183,10 €
Clutch Master 167.6 ls	12	Mineral oil	Black Street Master cylinder, black lever blade 163 mm, clutch switch BMW, mirror-mounting bracket BMW (M10x1.5 mm)	2700482	208,10 €
<b>BRAKE MASTER</b>					
Brake Master 167.51 ls	13	DOT4/5.1	Black Off-Road Master cylinder, black lever blade 163 mm, with brake light switch and mirror mount	2701418	214,95 €
Brake Master 167.60 ef	9,5	DOT4/5.1	Silver Off-Road Master cylinder, silver lever blade 123 mm, with brake light switch and standard mount	2701419	204,95 €



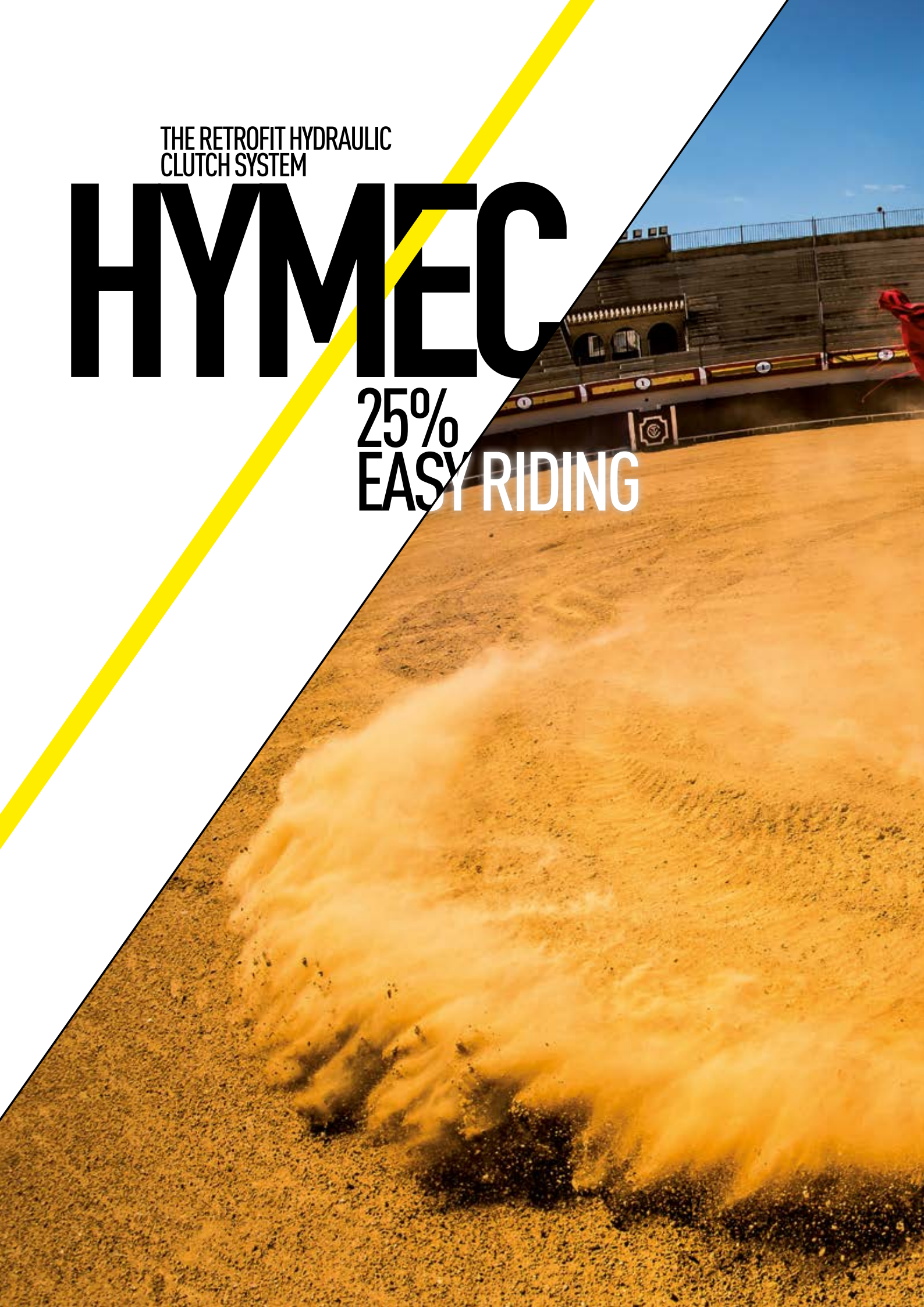
**SPARE PARTS AND ACCESSORIES  
ON PAGE 56**

\* Find clutch switches page 52-53 and 61  
Maximum stroke | 13.8 mm  
Lever ratio | 1:4  
Tubing fitting | M 10x1

THE RETROFIT HYDRAULIC  
CLUTCH SYSTEM

# HYMEC

25%  
EASY RIDING







Switch to HYMEC now for hydraulic clutch action. On-road or off-road, on long tours or your home circuit – with HYMEC every trip is just that bit more comfortable. Up to 25 percent less strength needed for clutch action and a clearly defined, constant bite point. HYMEC for an easier biking life.

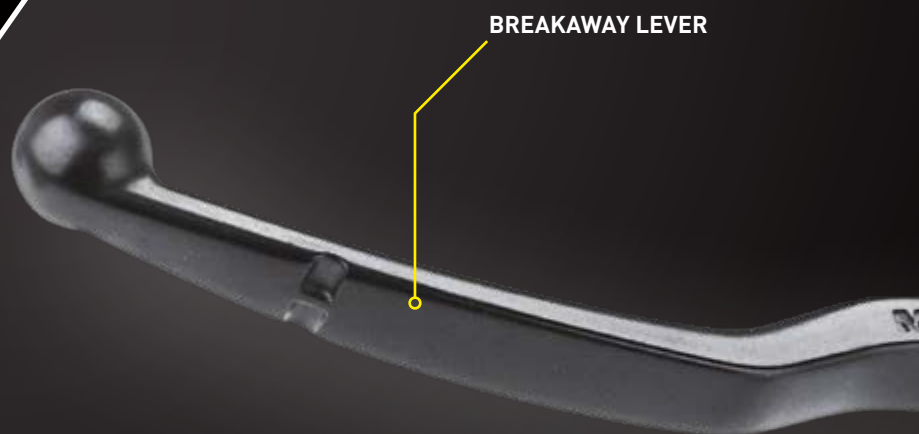
- robust
- easy to mount
- excellent modulation
- reduced maintenance



# HYMEC

The HYMEC ensures an easier operating pressure, a constant pressure point, no more cable adjustment and smooth clutch actuation to ensure the perfect take-off every time. HYMEC significantly improves vehicle performance – it allows the user to feel the point where the clutch releases and actuates. This product has been developed over many years and been tested under the toughest conditions possible in the world of motorcycle Off-Road sport. It has been used by world champion riders who all agree as to the benefits but it is just as useful to the complete novice who stalls at the traffic lights. Due to demand MAGURA now offers the HYMEC system for various road going motorcycles.

**HYMEC OFF-ROAD:** from 289,95 €  
**HYMEC ON-ROAD:** from 332,95 €



BREAKAWAY LEVER

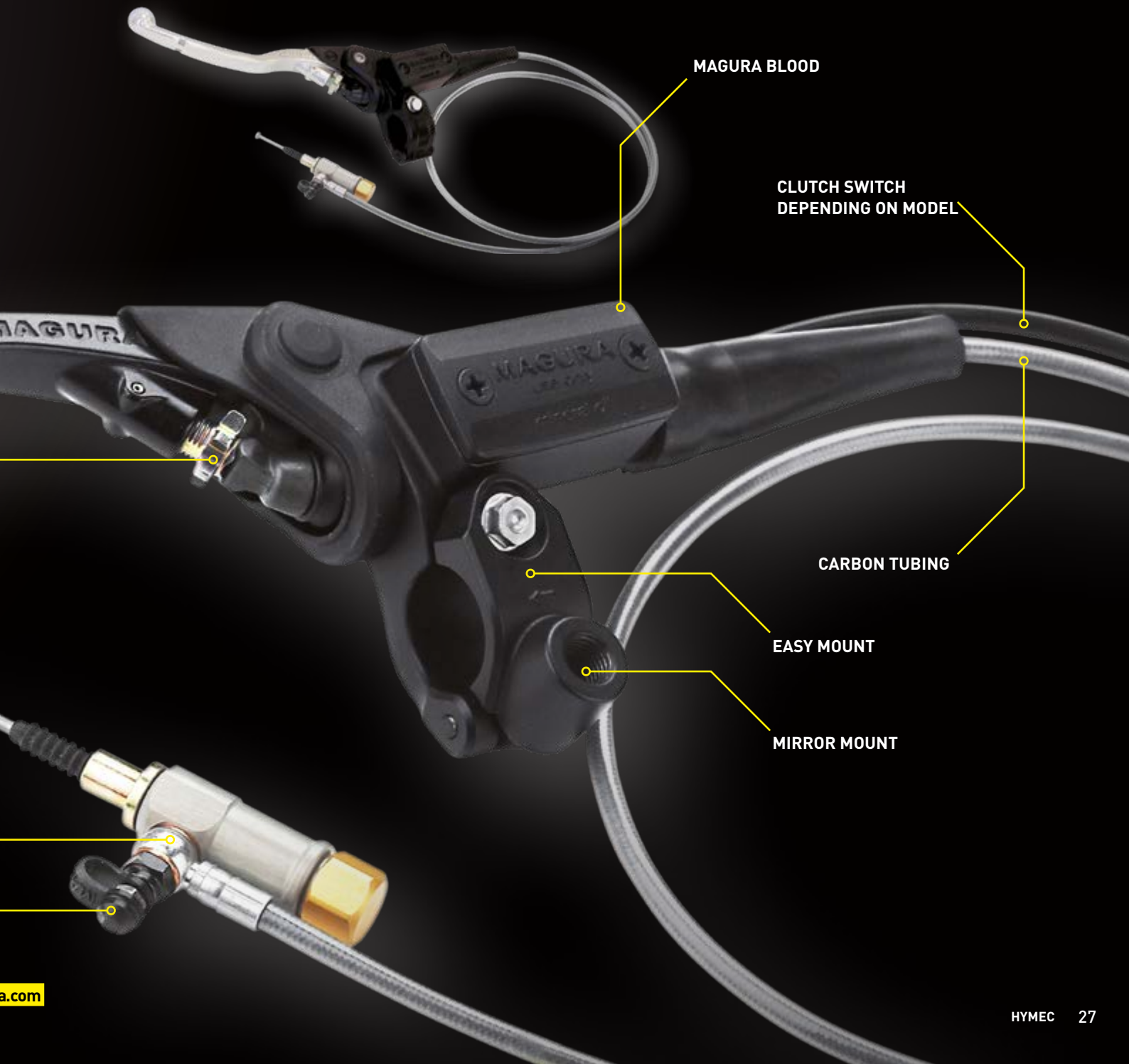
REACH ADJUST

RHR ROTATABLE  
HOSE ROUTING

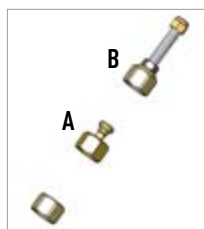
EASY FILL



MAGURA HYMEC – AN EASY TO INSTALL ALTERNATIVE TO A MECHANICAL CLUTCH. THIS SYSTEM REPLACES THE CLUTCH LEVER AND CABLE – WITH A SMALL LIGHTWEIGHT HYDRAULIC SYSTEM FOR IMPROVED CLUTCH CONTROL.



## OPTIONAL EXTRAS FOR YOUR HYMEC SLAVE CYLINDER



### HYMEC-SLAVE-REAR CAP KIT:

Contains standard, rearmount and rearmount vario cap options.

**ORDER CODE 2100018**  
**RRP 29,95 €**



### NIPPLE ADAPTER KIT:

If your clutch cable has a large attachment nipple you will require a nipple for the end of your HYMEC slave cylinder activation rod.

**ORDER CODE 2701674**  
Contains both an 11 and 14 mm attachment nipple adapter  
**RRP 11,95 €**

### A. REARMOUNT:

If your slave cylinder is attached with a rearmount together with any of the mounting adapters listed on page 52, pos. 28 you may require this REARMOUNT cap.

### B. REARMOUNT VARIO:

This kit enables the fitment of the HYMEC slave cylinder STANDARD as a REARMOUNT VARIO option. The VARIO option allows for adjustment and extends the fitment length by 55 to 77mm and can be used with all of the slave cylinders listed on page 29.



### 2 STROKE ATTACHMENT KIT:

If the HYMEC slave cylinder is located under the clutch cover it may be necessary to use one of the sleeves in conjunction with an o-ring.

**ORDER CODE 2701697**  
**RRP 26,95 €**

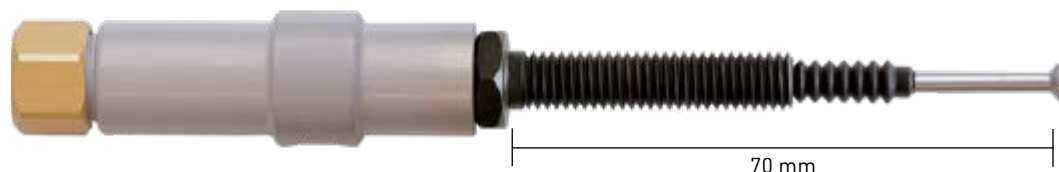
## REPLACEMENT HYMEC CLUTCH SLAVE CYLINDERS

If you have an older HYMEC clutch activation system and require a replacement slave cylinder but are not aware of the correct part number we have devised a method to make it easier for you to establish the part number for the replacement. Remove the slave cylinder from the motorcycle and activate the master cylinder until the slave cylinder activation rod is fully retracted and withdrawn. The piston in the slave cylinder is now contacting the bronze cap at the back of the slave cylinder and the rod length should be measured as shown on top of page 29. If the slave cylinder is no longer working it can be removed from the pressure line and forced slowly and carefully into the slave cylinder for the measurement.

Please note – the length you are measuring is not the activation length – the activation length is 16mm longer than the withdrawn length. Following the measurement please do not disregard your old slave cylinder you may require the cap or the support. All of our replacement HYMEC slave cylinders are delivered with the standard cap and standard support as shown in the pictures. If the slave cylinder you require lies between two different activation lengths – always order the longer version and use spacers between the support and the cable attachment to increase the activation length to suit your motorcycle.

## SPECIAL REPLACEMENT HYMEC SLAVE CYLINDERS

### STANDARD VARIO



### STANDARD BOLT



### STANDARD BOLT



### BMW F 800

→ F 700 GS  
→ F 800 GS  
→ F 800 R  
→ F 800 S  
→ F 800 ST  
→ F 800 GT  
→ F 650 GS (2-Cylinder)  
→ HUSQVARNA NUDA

activation length 57-78 mm

**ORDER CODE 2100022**  
**RRP 119,65 €**

### HARLEY SPORTSTER AB 1996

Spacer block for assembly should be removed after installation.

**ORDER CODE 0722160**  
**RRP 123,60 €**

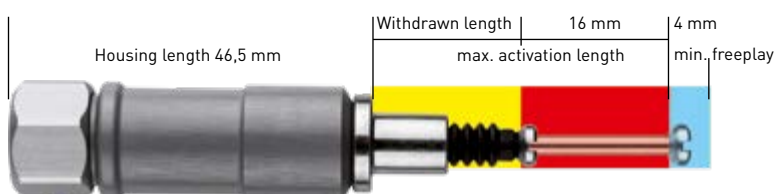
### BUELL XB-MODELLE 2002 – 2010

Spacer block for assembly should be removed after installation.

**ORDER CODE 0120624**  
**RRP 119,65 €**



## EXAMPLE



## STANDARD

Replacement HYMEC Slave Cylinders – to measure your slave cylinder – activate the master cylinder until the pull rod is fully withdrawn.

## WITHDRAWN LENGTH ACTIVATION LENGTH

A		16 mm	31–33 mm <b>ORDER CODE 2100308</b> <b>RRP 113,45 €</b>
B		24 mm	39–41 mm <b>ORDER CODE 0120649</b> <b>RRP 113,45 €</b>
C		31 mm	46–48 mm <b>ORDER CODE 0120648</b> <b>RRP 113,45 €</b>
D		35 mm	51–53 mm <b>ORDER CODE 0120655</b> <b>RRP 113,45 €</b>
E		41 mm	56–58 mm <b>ORDER CODE 0120652</b> <b>RRP 113,45 €</b>
F		45 mm	60–62 mm <b>ORDER CODE 0120651</b> <b>RRP 113,45 €</b>
G		50 mm	65–67 mm <b>ORDER CODE 2100003</b> <b>RRP 113,45 €</b>
H		55 mm	70–72 mm <b>ORDER CODE 0120653</b> <b>RRP 113,45 €</b>
J		67 mm	82–84 mm <b>ORDER CODE 0120659</b> <b>RRP 113,45 €</b>
K		90 mm	105–107 mm <b>ORDER CODE 0120657</b> <b>RRP 113,45 €</b>

## BUILD YOUR OWN HYMEC HYDRAULIC CLUTCH!

HYMEC is the solution for riders with small hands, reduced hand operating force and riders who require a precise clutch activation with a constant pressure point. Due to the number of enquiries we receive for HYMEC systems for motorcycles we have not measured, or have no ready to fit option for, we have completed this double page to assist you in the configuration of a new system. This should enable you to check if the system will fit your motorcycle and which parts list you will require to do so.

The MAGURA HYMEC-System is world renowned as a hydraulic conversion for cable operated mechanical clutch systems. The system is compatible with most clutch activations and offers a direct and constant pressure point. The advantages of this system are well documented in the press and riders forums.

### WHAT DO I NEED TO BUILD A HYMEC FOR MY BIKE?

#### 1. MASTER CYLINDER + 2. SLAVE CYLINDER + 3. PRESSURE LINE, FITTINGS AND OIL + 4. SPECIFIC SPARE PARTS

##### 1. MAGURA OFFER 3 MASTER CYLINDER OPTIONS:

Master Cylinder – as the system requires mineral oil and cannot be used with brake fluid the master cylinder should be mineral oil compatible.



##### HC¹ SLANTED RADIAL MASTER

**ORDER CODE 2100455**

Max. slave stroke: 10 -13 mm\*

Full details on page 16



##### HC³ FULLY RADIAL MASTER

**ORDER CODE 2100301**

Max. slave stroke: 8 -13 mm\*

Full details on page 20



##### 167 AXIAL MASTER

Ø 9,5 Street (Light operation)

**ORDER CODE 0723295**

Max. slave stroke: 8-10 mm\*

Ø 10,5 Street (Sports clutch)

**ORDER CODE 2700185**

Max. slave stroke: 10-12 mm\*

Full details on page 22

167 Street Master – switch, mirror clamp and black street lever included

HC¹ – Reservoir, switch and banjo bolt included

HC³ - Reservoir, switch and banjo bolt included

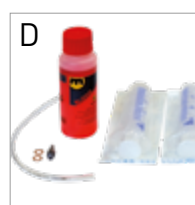
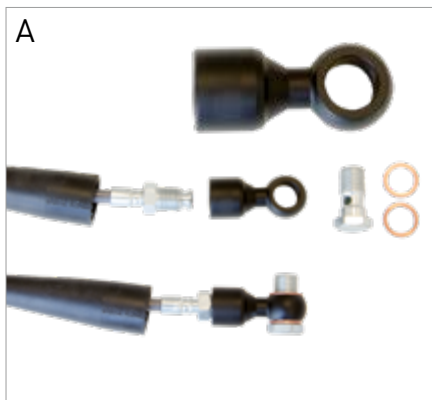
Optional extras on page 48/49

Optional extras on page 50/51

Optional extras on page 56

##### 2. PRESSURE LINE, FITTINGS AND SERVICE-KIT

	PART DESCRIPTION	ORDER CODE	HC¹	HC³	167
<b>A</b>	Radial Pressure Line Adapter	<b>2700499</b>	x	x	–
<b>B</b>	Pressure Line L=1500 mm cut to size	<b>0722679</b>	x	x	x
<b>B</b>	Pressure Line carbon L=1045 mm fixed length	<b>0722138</b>	x	x	x
<b>B</b>	Pressure Line carbon L=1120 mm fixed length	<b>0722137</b>	x	x	x
<b>C</b>	Banjo Bolt with Bleeder for slave	<b>0722136</b>	x	x	x
<b>D</b>	Service-Kit HYMEC (Fill and Bleed Kit)	<b>0722152</b>	x	x	x



\* Max. Slave stroke refers to possible max. stroke with lever adjusted to largest reach position.



### 3. SLAVE CYLINDER

In order to ascertain the correct slave cylinder for your motorcycle you will need to cut the template slave cylinder from this page, fit to the motorcycle and cut to size. If you do not feel qualified to remove the clutch cable please seek assistance from your local motorcycle technician.

There are 2 basic forms of slave cylinder attachment:

#### 1. STANDARD cable fitting: Slave template 1

#### 2. REARMOUNT VARIO – Slave template 2

The REARMOUNT VARIO fitting can be adjusted to fit correctly using the rear locknut.



STANDARD template 1

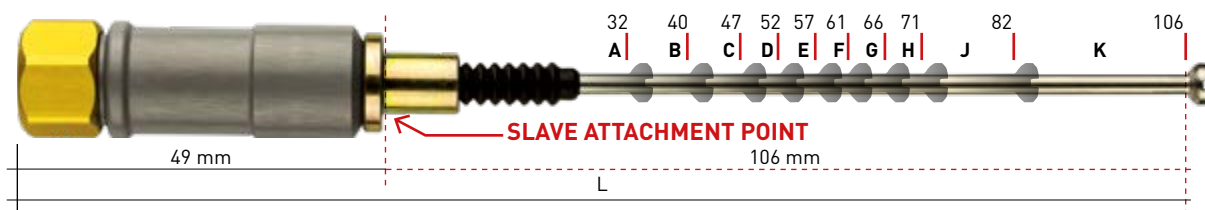


REARMOUNT VARIO template 2

#### STANDARD

Carefully cut the template out and fit to your motorcycle. The clutch activation arm at the engine should be pushed with your finger as far forward towards the slave cylinder as possible and the template should then be cut at the next longest available point.

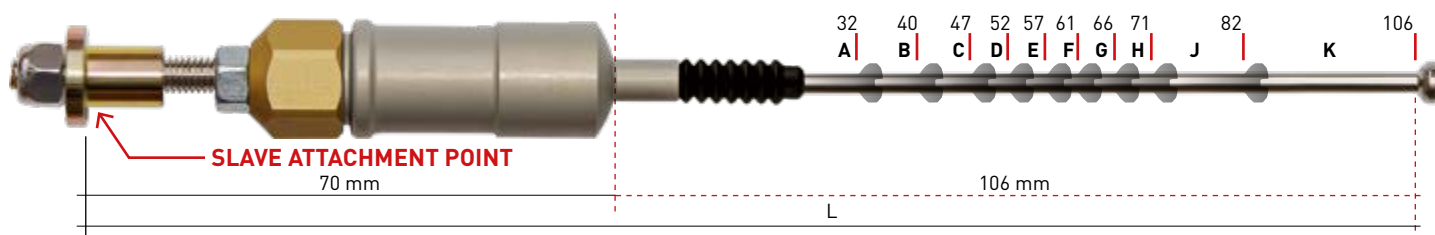
Then compare the number on the template to the list on pages 28/29 to pick the correct slave cylinder. If the slave is too long it can be shortened by placing spacer washers between the slave and the mounting point – if it is too short it will not work correctly. If in doubt choose the longer version.



#### REARMOUNT VARIO

Carefully cut the template out and fit to your motorcycle. The clutch activation arm at the engine should be pushed with your finger as far forward towards the slave cylinder as possible and the template should then be cut at the next longest available point.

Then compare the number on the template to the list on pages 28/29 to pick the correct slave cylinder – you will also require **ORDER CODE 2100018 REARMOUNT VARIO Kit** to mount the slave from behind. The threaded attachment kit at the rear should allow for sufficient adjustability when installing the slave cylinder.



#### POSSIBLE SLAVE CYLINDER DEVIATIONS

Some motorcycle models require a large nipple to attach to the clutch activation arm.

Some 2 stroke models have the cable fitted beneath an engine casing and require a special 2 stroke bracket.



**ORDER CODE 2701674**  
Set with 1x 11 mm and 1x 14 mm

RRP 11,95 €



**ORDER CODE 2701697**  
**2 Stroke Attachment Kit HYMEC**  
Includes  
Sleeve 15 mm,  
Sleeve 12 mm, Spacer,  
disc and O-Ring  
RRP 26,95 €

**BEFORE INSTALLING YOUR NEW HYMEC PLEASE DOWNLOAD THE CURRENT HYMEC-MANUAL FROM OUR WEBSITE! HYMEC DOES NOT AFFECT YOUR VEHICLE REGISTRATION.**


MAGURA HAVE BEEN SUPPLYING  
PARTS TO BMW MOTORCYCLES ON  
EVERY MODEL SINCE 1923.

# PERFOR- MANCE PARTS

FOR BMW





A full-page photograph of two motorcyclists on a dirt trail. The central figure is wearing a white Scott helmet with goggles, a dark grey and black Scott riding suit, and white gloves. They are leaning forward on a black motorcycle, which has a large, clear, dust-covered wind deflector. To the left, another rider in a red jacket and black helmet is partially visible. The background consists of dry brush and a large rock. The overall scene is dynamic and suggests off-road riding.

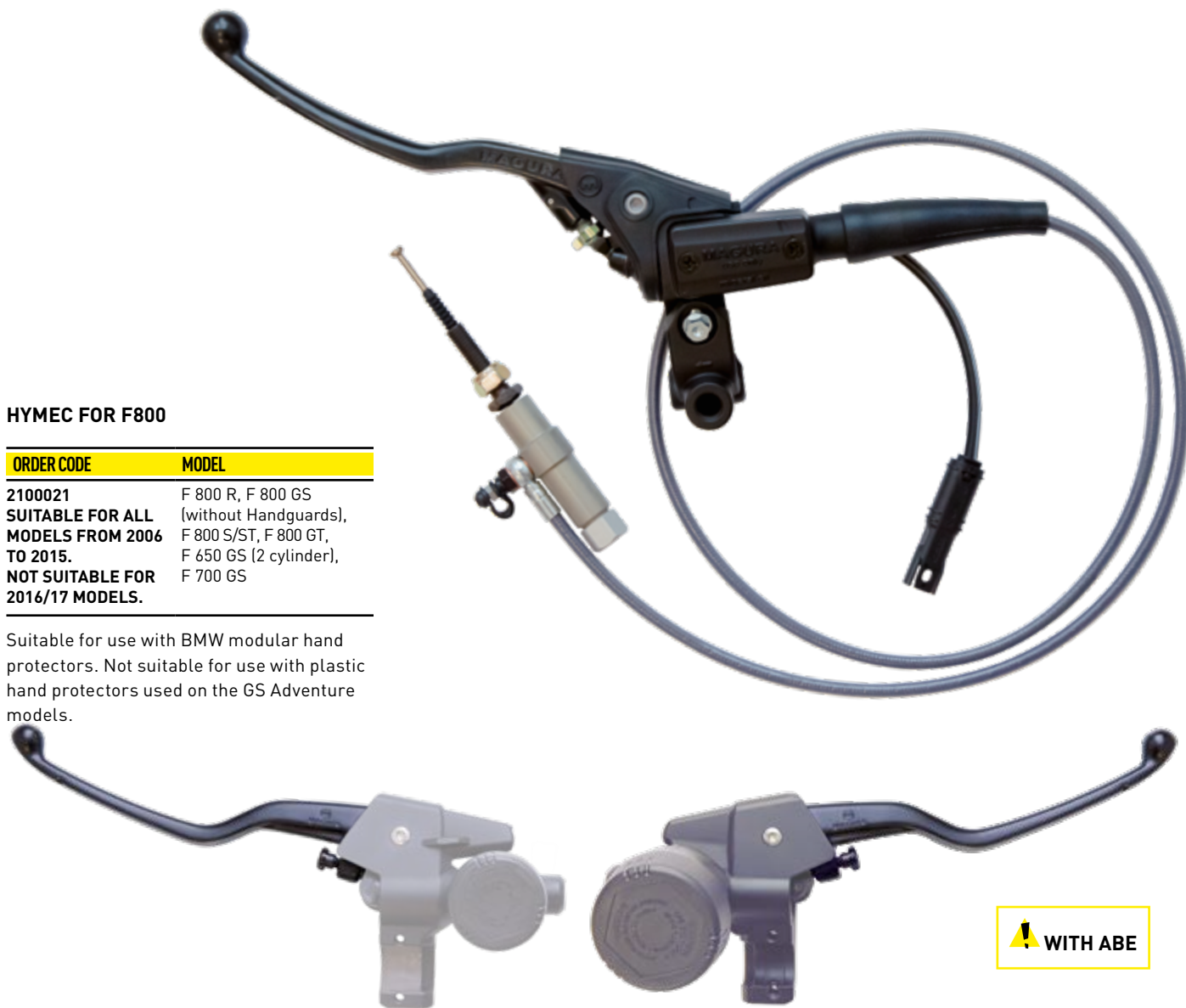
When it comes to control nobody does it better.  
The experience of over 90 years flows into our  
aftermarket products to ensure that an upgrade  
is just that.



## HYMEC FOR F800

ORDER CODE	MODEL
2100021	F 800 R, F 800 GS
<b>SUITABLE FOR ALL MODELS FROM 2006 TO 2015.</b>	(without Handguards), F 800 S/ST, F 800 GT, F 650 GS (2 cylinder), F 700 GS
<b>NOT SUITABLE FOR 2016/17 MODELS.</b>	

Suitable for use with BMW modular hand protectors. Not suitable for use with plastic hand protectors used on the GS Adventure models.



ORDER CODE 2100017

ORDER CODE 2100016

 WITH ABE

## REPLACEMENT LEVERS FOR BMW MOTORCYCLE.

MAGURA replacement levers represent an improvement on motorcycles since 1923. The ergonomics, material quality and finish are first class. Tested and approved by the TÜV organisation in Germany these levers meet and surpass the highest standards set for master cylinder operation on a motorcycle. Trust MAGURA to offer the best levers for your bike.

MODELL		YEAR	MODELLCODE	CLUTCH LEVER	BRAKE LEVER	RRP
650/700	F 650 GS	2007 – 2012	K72	Not available	<b>2100016</b>	37,45 €
	F 700 GS	2013 – 2015	K72	Not available	<b>2100016</b>	37,45 €
800	F 800 GS/Adv	2007 – 2017	K72	Not available	<b>2100016</b>	37,45 €
	F 800 GT	2012 – 2017	K71	Not available	<b>2100016</b>	37,45 €
	F 800 R	2007 – 2016	K73	Not available	<b>2100016</b>	37,45 €
	F 800 S/ST	2007 – 2010	K71	Not available	<b>2100016</b>	37,45 €
1200	R 1200 GS/Adv	2003 – 2013	K25	<b>2100017</b>	<b>2100016</b>	je 37,45 €
	R 1200 R	2006 – 2014	K27	<b>2100017</b>	<b>2100016</b>	je 37,45 €
	R 1200 S	2005 – 2009	K29	<b>2100017</b>	<b>2100016</b>	je 37,45 €
	R 1200 ST	2004 – 2008	K28	<b>2100017</b>	<b>2100016</b>	je 37,45 €
	HP2 Enduro	2005 – 2007	K25HP	<b>2100017</b>	<b>2100016</b>	je 37,45 €
	HP2 Megamoto	2007 – 2010	K25/03	<b>2100017</b>	<b>2100016</b>	je 37,45 €
	HP2 Sport*	2007 – 2010	K29HP	<b>0722112</b>	<b>0722202</b>	je 34,30 €
	K 1200 S	2005 – 2009	K40	<b>2100017</b>	<b>2100016</b>	je 37,45 €
	K 1200 R	2005 – 2009	K43	<b>2100017</b>	<b>2100016</b>	je 37,45 €
	K 1200 R Sport	2005 – 2009	K43	<b>2100017</b>	<b>2100016</b>	je 37,45 €
	K 1200 GT	2005 – 2009	K44	<b>2100017</b>	<b>2100016</b>	je 37,45 €
1300	K 1300 S	2009 – 2015	K40	<b>2100017</b>	<b>2100016</b>	je 37,45 €
	K 1300 R	2009 – 2013	K43	<b>2100017</b>	<b>2100016</b>	je 37,45 €
	K 1300 GT	2009 – 2012	K44	<b>2100017</b>	<b>2100016</b>	je 37,45 €

\*This lever is not pictured on this page – please see 195 Radial Master Cylinder (on page 55)





MODEL	YEAR
K1	1988 – 1993
K 1100 RS	1991 – 1996
K 1100 LT	1991 – 1998
R 850 R	1994 – 2001
R 850 GS	1998 – 2000
R 1100 RS	1993 – 2001
R 1100 GS	1994 – 1999
R 1100 R	1994 – 1999
R 1100 RT	1995 – 2001

ORDER CODE 2701122  
RRP 54,95 €

#### REPAIR-KIT 288 (20 MM)

The repair kit 288 is suitable for all 20 mm master cylinders which began production with the first BMW K1 model and were also used in the first 4V 1100cc boxer models up to the introduction of the 1150 range. This kit includes all you require to repair a model 288 master cylinder. Before ordering please ensure that the cylinder is not internally scratched or worn.

APPROVED BY SIMON PAVEY, TOMM WOLF, BMW OFF-ROAD INSTRUCTORS



#### Suitable for use on:

- R 1200 GS LC
- R 1200 GS LC Adventure
- R 1200 R LC
- R 1200 RT LC
- R 1200 RS
- R nineT

Not suitable for application on models Pure, Racer, Scrambler or Urban G/S



ORDER CODE 2100546  
RRP 299,95 €

#### UPGRADE YOUR BMW WITH MAGURA PERFORMANCE PARTS

The new BMW R-models have established the benchmark in the Adventure-, Touring- and Urban category. How do you improve the best motorcycle controls available? Easy with MAGURA Performance Parts! To celebrate 90 years in the search for perfect control on a motorcycle we have prepared an upgrade kit for your new BMW Motorcycle with two optional elements.

MAGURA Performance Parts will add value to your motorcycle. They are designed to stand the test of time and can be ordered and fitted separately or together as you wish. The materials used are lightweight, extremely durable and strong. Each product contains 90 years of motorcycling know-how combined with our passion for perfection.

Fold Away Lever Kit | Fold levers with position detent lock and reach adjust selector are machined from top grade aluminium. Fully ABE tested and approved.

ORDER CODE 2100547  
RRP 199,95 €



CNC Reservoir Cover Kit | Honed from top grade aluminium this kit will add optically to your new BMW. Reservoir breather remains fully functional and an optional fluid level sight glass protector is included just in case you intend to use the bike to cross continents.

MAGURA  
HANDLEBARS

# X-LINE

4 MM  
THE SPECIAL ONE



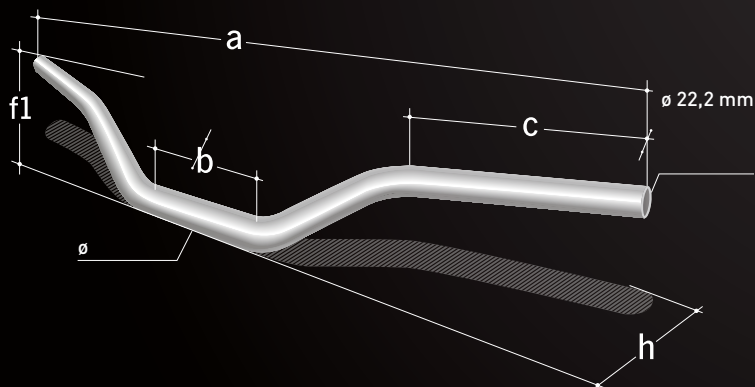




- Light
- Ergonomically designed
- Robust
- Reduced rider fatigue

# X-LINE

## HANDLEBARS

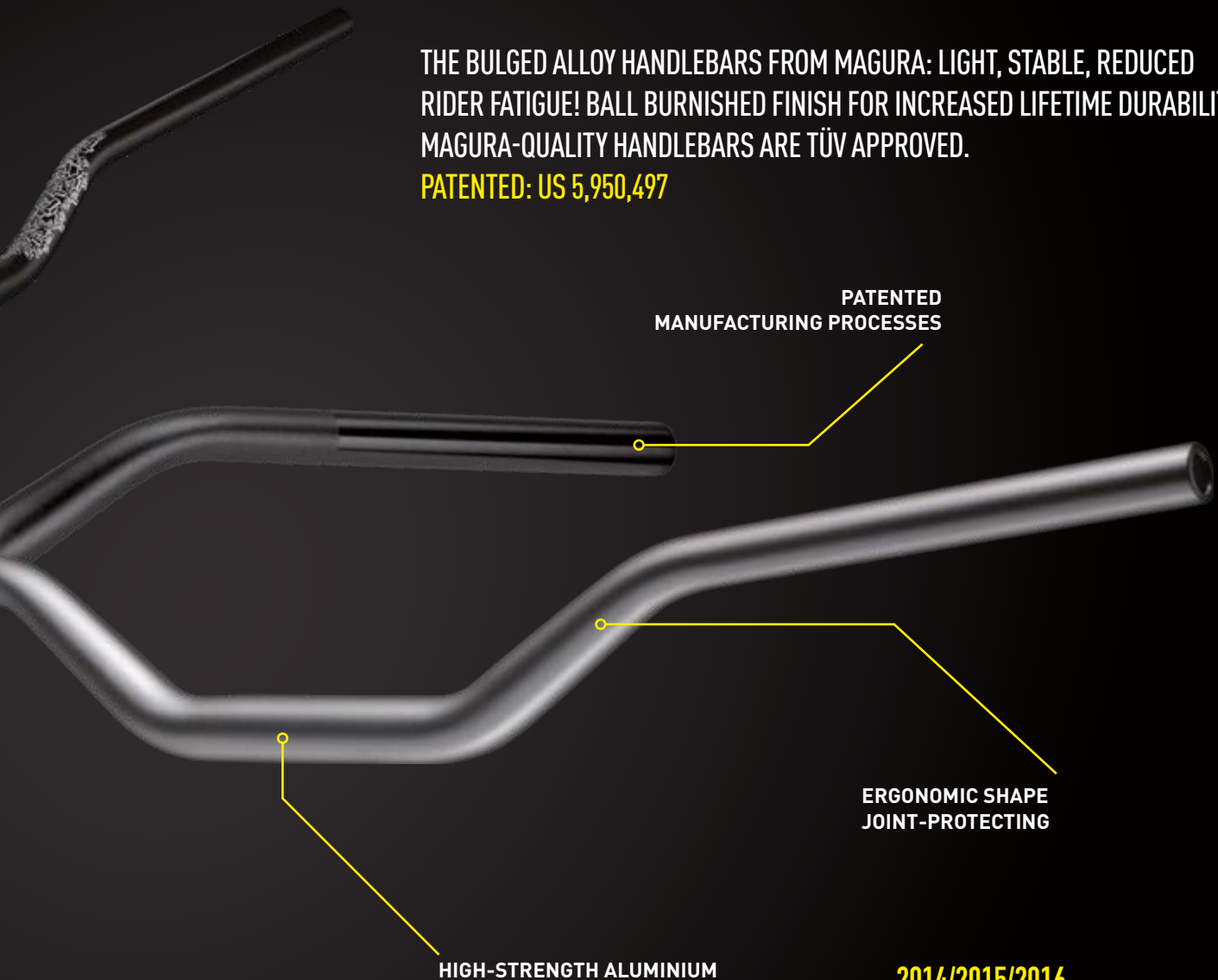


MODEL	COLOUR	DIMENSIONS IN MM						ORDER CODE	RRP
		a	b	c	f1	h	Ø		
AX2 Big-Enduro Handlebar	Silver	827	134	230	206	100	28,6	0723198	146,15 €
MX2 Motocross, Supermoto	Silver	808	135	189	119	77	28,6	0721245	119,65 €
CX »Street«	Silver	805	135	200	117	76	28,6	0723050	119,65 €
EX Enduro	Silver	795	135	186	120	87	28,6	0721053	119,65 €
SX Supercross, Supermoto, Motocross	Silver	808	135	189	120	63	28,6	0721055	119,65 €
TX Touring	Black	797	139	217	138	97	28,6	0723248	121,70 €
FX Streetfighter	Black	750	137	210	98	107	28,6	0723247	121,70 €
SX »Street«	Black	808	135	189	120	63	28,6	0723221	119,65 €
CPX – Chris Pfeiffer Edition	Black	797	131	231	113	76	28,6	0723283	121,70 €
RBX – Rok Bagoros Edition*	Black	792	116	231	112	74	26	2701776	129,95 €

\* Clamp Diameter 26 mm. Only suitable for KTM Duke models with 26 mm handlebar clamp dimension.



THE BULGED ALLOY HANDLEBARS FROM MAGURA: LIGHT, STABLE, REDUCED RIDER FATIGUE! BALL BURNISHED FINISH FOR INCREASED LIFETIME DURABILITY. MAGURA-QUALITY HANDLEBARS ARE TÜV APPROVED.  
**PATENTED: US 5,950,497**



**2014/2015/2016**  
**TECHNICAL PARTNER**  
**TEAM HRC DAKAR -**  
**HANDLEBAR SUPPLIER**

#### ACCESSORIES



X-line fork clamp kit for bikes with split clamp. Screw M 10 x 70, with bushings.

#### OFF-ROAD

ORDER CODE  
 0720474  
 RRP 55,64 €



X-line clamp kit for one piece clamp/fork bridges. Fits HONDA, YAMAHA, SUZUKI etc., hole distance 32-36 mm. Allows fitment of 28,6 mm tapered handlebar into a standard 22 mm clamp.

#### OFF-ROAD

ORDER CODE  
 0720488  
 RRP 55,64 €



MAGURA-Barpad, black

#### OFF-ROAD

ORDER CODE  
 0723058  
 RRP 27,05 €



Black X-line "Street" clamp kit for bikes with split clamp (complete). Screw M 10 x 70, with bushings.

#### ON-ROAD

ORDER CODE  
 0723270  
 RRP 109,25 €



Black X-line "Street" clamp kit for 22 mm clamp conversion, clamping range 32-36 mm. Allows fitment of 28,6 mm tapered handlebar into a standard 22 mm clamp.

#### ON-ROAD

ORDER CODE  
 0723271  
 RRP 121,70 €

SPARE PARTS  
FOR OLDTIMER  
AND CLASSIC  
BIKES

# CLASSICS

90 YEARS  
OF TRADITION









### 73 SPORT BRAKE LEVER

Sport brake lever for mechanical brakes (drum brakes).  
Light weight forged alloy black split perch clamp and polished Eurostyle ball-end blade, 160 mm long, Ø 8.2 mm hole for rearview mirror.

MODEL	DESCRIPTION/APPLICATION	ACCESSORIES	ORDER CODE	RRP
B-lever 73.2	Thread 1/4" for brake light switch (0128496)	Nipple barrel, solder nipple, adjusting screw and protective cap	<b>0116933</b>	48,45 €

Technical data: Cable pull 20 mm | thread M7 for adjusting screw



### 73.202 SPORT BRAKE LEVER DUAL PULL

Sport brake lever for mechanical brakes (twin drum brakes).  
Light weight forged black split perch clamp and polished ball-end lever, 160 mm long, Ø 8.2 mm hole for rearview mirror.

MODEL	DESCRIPTION/APPLICATION	ACCESSORIES	ORDER CODE	RRP
B-lever 73.202	Dual-cable pull, with equalizer, to operate two drum brakes	Soldernippel	<b>0116934</b>	99,95 €

Technical data: Cable pull 20 mm | thread M7 for adjusting screw



### 74 SPORT CLUTCH LEVER

Sport clutch lever, light weight forged alloy black split perch clamp and polished, Eurostyle ball-end blade, 160 mm long, Ø 8.2 mm hole for rearview mirror

MODEL	DESCRIPTION/APPLICATION	ACCESSORIES	ORDER CODE	RRP
C-lever4.1	Cable pull 20 mm at 3.9 ratio, HUSQVARNA, KTM, MAICO etc.	Nipple barrel, solder nipple, adjusting screw and protective cap	<b>0116940</b>	48,45 €

Technical data: Cable pull 20 mm | lefthand thread M7 for cable adjusting screw



### PROTECTION CAP SET

Protection cap set for 73 Sport brake lever and 74 Sport clutch lever

MODEL	DESCRIPTION/APPLICATION	ORDER CODE	RRP
Protection cap set 73/516 ksz	Protection cap set for 73 Sport brake lever and 74 Sport clutch lever	<b>0735083</b>	11,90 €





### 101 CLUTCH LEVER

Clutch lever with clamp for tube-Ø 22 mm, with thread M6 for adjusting screw or supporting hole Ø 6.5 mm for cable.

MODEL	DESCRIPTION/APPLICATION	ACCESSORIES	ORDER CODE	RRP
C-lever 101.2.9	Black shank with thread for adjusting screw, black fibre reinforced lever blade, SPARTA	Adjusting screw, barrel, nipple	<b>0117380</b>	23,95 €
C-lever 101.4.8	Black shank with thread for adjusting screw, polished aluminium lever blade with stop notch	Barrel, nipple, s-nipple	<b>0117421</b>	30,45 €
C-lever 101.7.9	Black shank with supporting hole and thread for switch, black fibre reinforced lever blade with pull back spring, PUCH, TOMOS	Barrel, nipple	<b>0117496</b>	23,95 €
C-lever 101.8.9	Black shank with thread M 6 and thread for switch, black fibre reinforced lever blade with pull back spring	Adjusting screw, barrel, nipple	<b>0117514</b>	26,95 €

Technical data: Cable pull | 18 mm, length of lever blade 125 mm, blade with ball end Ø 18 mm



### 108 BRAKE LEVER

Brake lever righthand for tube-Ø 22 mm, cable supporting hole, alloy lever blade or reinforced fibre lever blade.

MODEL	DESCRIPTION/APPLICATION	ORDER CODE	RRP
B-lever 108.4.9	Righthand, black fibre reinforced lever blade, thread for brake light switch, pull back spring, supporting hole	<b>0119570</b>	26,95 €

Technical data: Cable pull | 18 mm



### DECOMPRESSION LEVER

Decompression lever, shank Ø 22 mm with supporting hole Ø 6.7 mm, cable fixing with clamp screw, cable pull 16 mm.

MODEL	DESCRIPTION/APPLICATION	ORDER CODE	RRP
Lever 12	Decompression lever, shank Ø 22 mm with supporting hole Ø 6.7 mm, cable fixing with clamp screw	<b>0111370</b>	22,80 €

Technical data: Cable pull | 16 mm



### 225 HYDRAULIC BRAKE AND CLUTCH LEVER

#### Features and benefits

Hydraulic brake and clutch lever, black painted housing with a (22 mm) clamp, polished alloy lever, thread for brake light switch and hole Ø 8.1 mm or thread M8 for rear-view mirror, thread M10 x1, plastic brake fluid reservoir. Obtainable as righthand and lefthand model. Fitting brake and clutch switch see page 61

MODEL	PISTON Ø IN MM	DESCRIPTION/APPLICATION	ORDER CODE	RRP
<b>BRAKE</b>				
B-lever 225.2	13	Polished lever, hole-Ø 8.1 mm for mirror	<b>0122000</b>	123,95 €
B-lever 225.4	16	Polished lever, hole-Ø 8.1 mm for mirror	<b>0122020</b>	123,95 €
<b>CLUTCH</b>				
C-lever 225.52	13	Polished lever, hole-Ø 8.1 mm for mirror	<b>0122110</b>	123,95 €
C-lever 225.54	16	Polished lever, hole-Ø 8.1 mm for mirror	<b>0122130</b>	123,95 €

Technical data: Stroke | 12 mm



### THROTTLE TWIST GRIP WITH MECHANICAL BRAKE 233

Single cable pulley throttle grip with mechanical brake lever. The throttle cable guide is open to enable external cable attachment. Folded and polished alloy lever.

MODEL	DESCRIPTION/APPLICATION	ACCESSORIES	ORDER CODE	RRP
Throttle twist grip 233.2.8	Housing painted black, grip black, folded and polished alloy lever. Suitable for Batavus, Hercules, Kreidler, Puch and Zündapp models.	Barrel, nipple and solder nipple	<b>2100541</b>	46,95 €

Technical Data: Cable pull | throttle 22 mm at a rotation of 75°, brake 18 mm



### 273 THROTTLE TWIST GRIP WITH MECHANIC BRAKE

Straight pulley throttle twist grip with brake lever blade, one cable pull (possibility for outer attachment), black painted housing with supporting hole Ø 6.5 mm or adjusting screw for cable, polished alloy lever or fibre reinforced lever blade with or without pull back spring, sliding clamp for screwing or for solder nipple.

MODEL	DESCRIPTION/APPLICATION	ACCESSORIES	ORDER CODE	RRP
Throttle twist grip 273.6.8	Black housing with thread for brake light switch, sliding clamp, PUCH	Barrel, nipple	<b>0123953</b>	72,45 €
Throttle twist grip 273.6.8	As above, but without accessories	–	<b>0123954</b>	68,95 €

Technical data: Cable pull | throttle 21 mm at a rotation of 104°, brake 18 mm



### 307 THROTTLE TWIST GRIP

Outer pulley throttle twist grip, single cable pull, straight cable up to 38 mm stroke, polished aluminium housing with trap door cover and adjusting screw for twist regulation, cable protection cover.

MODEL	DESCRIPTION/APPLICATION/VERWENDUNG	ACCESSOIRES	ORDER CODE	RRP
Throttle twist grip 307.1	For general using	Solder nipple, grub screw, cable protection cover	<b>0125600</b> <b>B</b>	91,95 €

Technical data: Total stroke | 46 mm at a rotation of 115° for handlebars Ø 22 mm and 7/8"



### 309 THROTTLE TWIST GRIP

Throttle twist grip, one cable pull, with big rotation, two part housing of reinforced poly-carbon, protective sleeve.

MODEL	DESCRIPTION/APPLICATION	ACCESSORIES	ORDER CODE	RRP
Throttle twist grip 309.1	With grip "Street", SIMSON, SACHS, KTM, ZÜNDAPP	Cable support, cap, solder nipple	<b>0126003</b>	39,95 €

Technical data: Total stroke | 50 mm at a rotation of 213°





### 314 THROTTLE TWIST GRIP

Motocross throttle twist grip with single cable, parallel pull. DUO-settings (Motocross or Enduro). Cable routed over roller for ease of pull. Black reinforced poly carbon housing, pro-grid rubber grip, quick and easy cable change, without removing housing. Can be changed to enduro setting.

MODEL	DESCRIPTION/APPLICATION	ACCESSORIES	ORDER CODE	RRP
Throttle twist grip set 314/029	In Motocross setting, with matching left grip	Solder nipple, rubber cable cover	<b>0730218</b>	56,00 €
Throttle twist 314	In Motocross setting without matching left grip	Solder nipple, rubber cable cover	<b>0126386</b>	47,95 €

Technical data: Total stroke | 48 mm at a rotation of 103°/91°

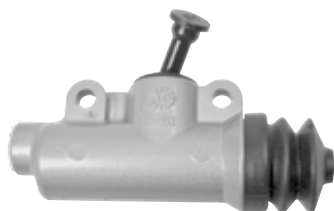


### 317 ELECTRIC THROTTLE TWIST GRIP

Housing made of glass-fibre reinforced plastics for tube-Ø 22 mm. Overall length 150 mm, max. current-carrying capacity 1 Watt, resistor and range of control of the potentiometer see below. Outer diameter of connection cable-Ø 6 mm, cable up to 3 seeses.

MODEL	DESCRIPTION/APPLICATION	ORDER CODE.	RRP
Throttle twist grip/ Poti 317.2	5 kOhm-potentiometer, working rate 0–5 kOhm, cable length 800 mm	<b>0026471</b>	65,50 €
Throttle twist grip/ Poti 317.4	5 kOhm-potentiometer, working rate 0–5 kOhm, cable length 1800 mm	<b>2101014</b>	65,50 €
Throttle twist grip/ Poti 317.9	5 kOhm-potentiometer, working rate 0–5 kOhm, cable length 225 mm, with Molex-plug, for MuZ-Scooter "Charly"	<b>2101015</b>	65,50 €

Technical data: Rotation angle 75°



### 700 MASTER BRAKE CYLINDER

Master brake cylinder for foot controlled rear disc brakes, tubing fitting M 10x1 to the brake calliper, without brake fluid reservoir, fitting for tubing connection to an external brake fluid reservoir.

MODEL	PISTON Ø IN MM	DESCRIPTION/APPLICATION	ORDER CODE	RRP
Master brake cylinder 700.33	16	Chrome painted housing, EML, KTM	<b>0131411</b>	140,45 €

Technical data: Stroke | 12 mm

SPARE PARTS AND  
ACCESSORIES

# SPARE PARTS

100%  
PERFORMANCE

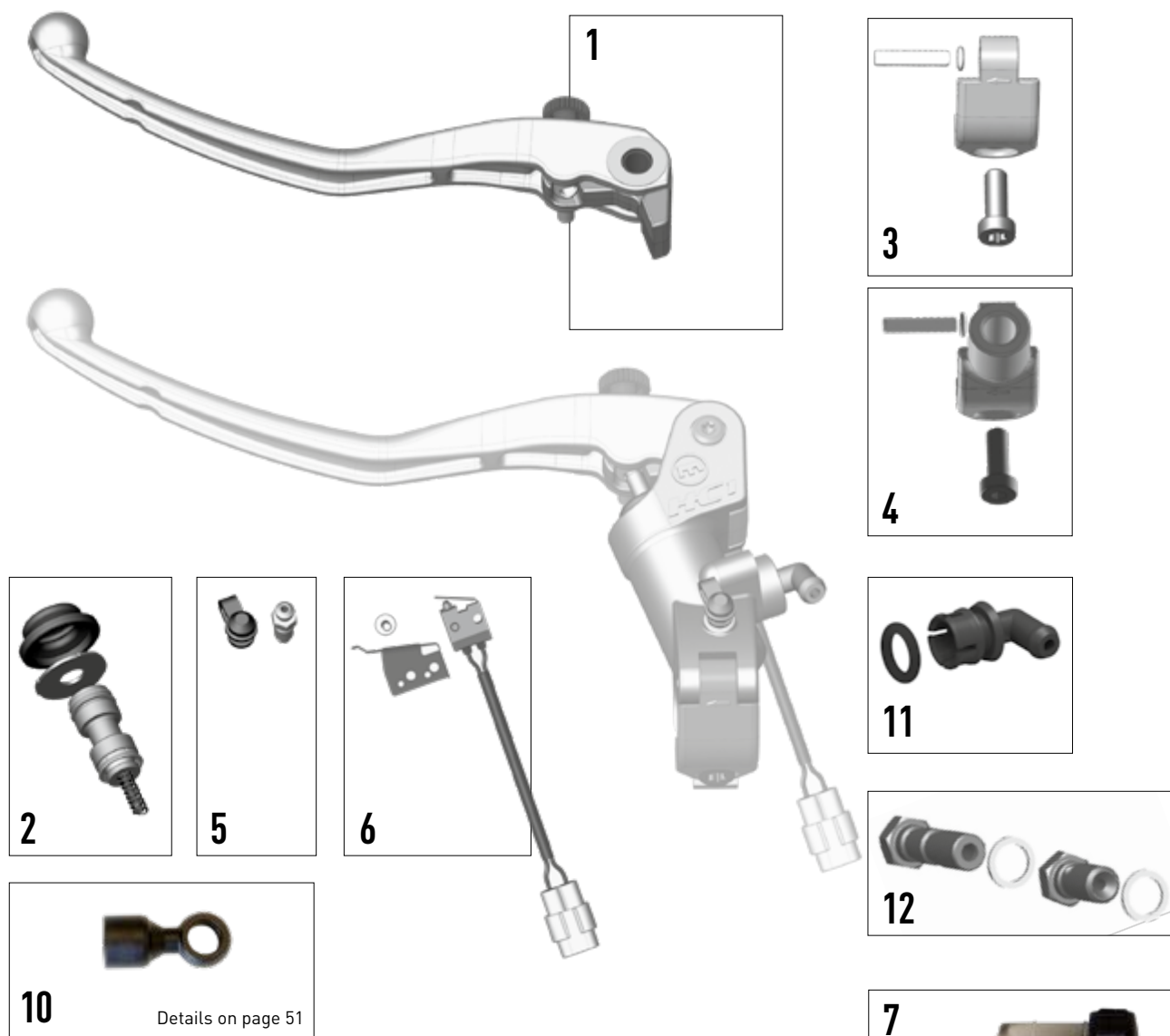




- 100% performance
- 100% precise fitment
- 100% flexible
- 100% MAGURA-quality



## HC¹ CLUTCH MASTER



POSITION	DESCRIPTION/APPLICATION	ORDER CODE	RRP
1	Clutch lever assembly large L = 180 mm	2701156	34,30 €
	Piston kit Ø12 mineral oil	0723234	33,30 €
	Piston kit Ø13 mineral oil	0722110	33,30 €
2	Piston kit Ø12 DOT	0722211	33,30 €
	Piston kit Ø13 DOT	0722210	33,30 €
	Piston kit Ø16 DOT	0722209	33,30 €
3	Mounting bracket	2701161	12,45 €
4	Mirror mounting bracket M10 x 1,25	2701162	22,30 €
5	Bleeding valve M5 x 0,8	0722214	12,45 €
6	Start safety switch	2701168	31,20 €
7	Clutch reservoir 9 ml flange mount for mineral oil (compatible with HYMEC)	2700787	36,50 €
8	Clutch reservoir 9 ml remote mount for mineral oil	2700492	41,20 €
9	Clutch reservoir 9 ml remote mount for DOT	2700491	41,20 €
10	Radial Pressure Line Adapter Adapter converts banjo ring from axial to radial connection avoiding the requirement for a new brake or clutch pressure line. Suitable for brake and clutch applications Suitable for application with MAGURA HYMEC pressure lines	2700499	36,05 €
11	Stutzen mit O-Ring für DOT	2701678	12,95 €
	Stutzen mit O-Ring für Mineralöl	2701677	12,95 €
	Hohlschraube M10 x 1	0721786	10,80 €
12	Doppel-Hohlschraube M10 x 1 Beinhaltet Dichtringe	0721789	10,80 €

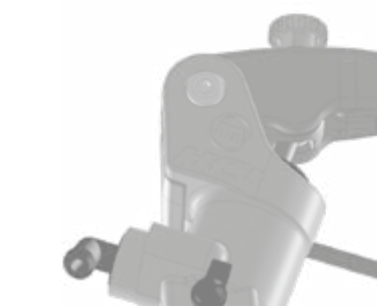
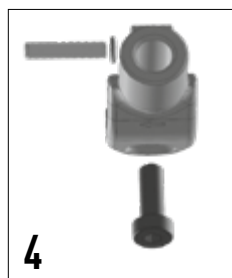
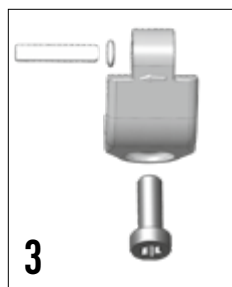




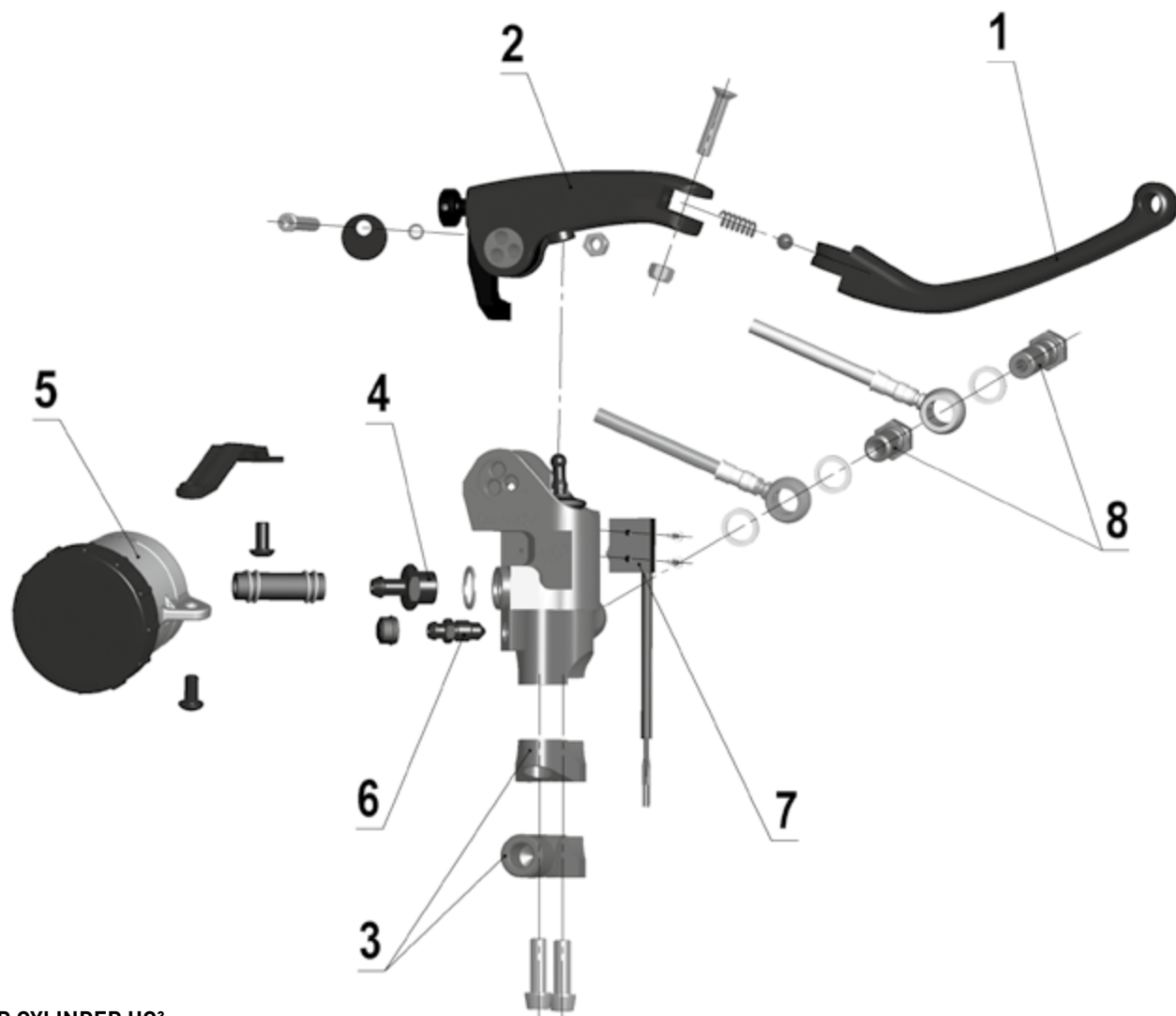
## SERVICE

To obtain the full performance from your HC master you will need to return it to MAGURA or to a certified service partner to have it serviced. We recommend a service every 100,000 km or 10 years.

### HC1 BRAKE MASTER

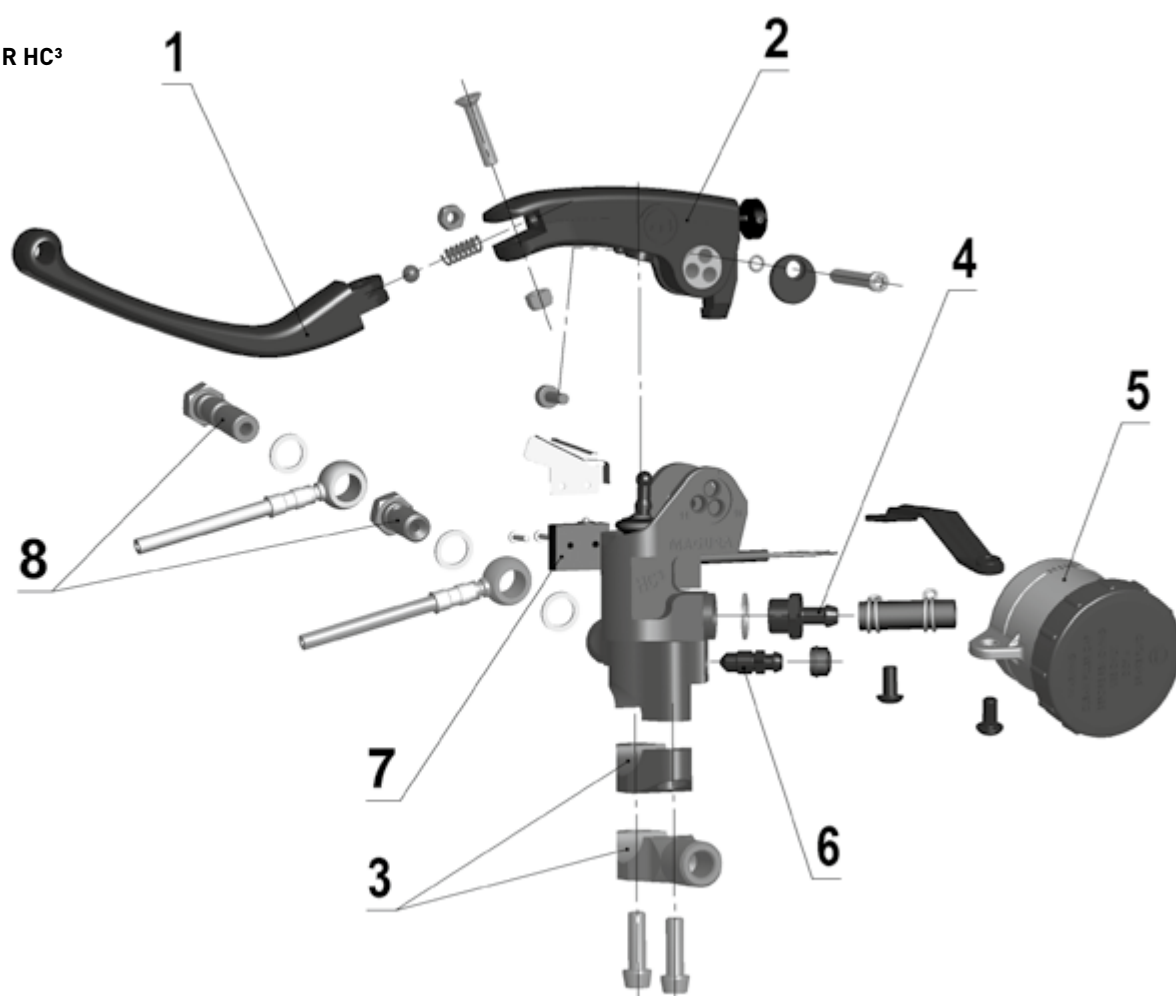


POSITION	DESCRIPTION/APPLICATION	ORDER CODE	RRP
1	Brake lever assembly large L = 180 mm	2701157	34,30 €
2	Brake lever assembly large L = 155 mm	2701158	34,30 €
3	Mounting bracket	2701161	12,45 €
4	Mirror mounting bracket M10 x 1,25	2701162	22,30 €
5	Bleeding valve M5 x 0,8	0722214	12,45 €
6	Brake light switch	0722213	30,70 €
7	Brake reservoir 16 ml flange mount for single calliper brake systems	2700786	36,50 €
8	Brake reservoir 36 ml remote mount for double calliper brake systems	2700488	41,20 €
9	Brake reservoir 9 ml remote mount for single calliper brake systems	2700490	41,20 €
10	Radial Pressure Line Adapter Adapter converts banjo ring from axial to radial connection avoiding the requirement for a new brake or clutch pressure line. Suitable for brake and clutch applications Suitable for application with MAGURA HYMEC pressure lines	2700499	36,05 €
11	Socket with O-Ring for DOT	2701678	12,95 €
12	Banjo Connector M10 x 1 Double Banjo Connector M10 x 1 Includes gasket washers	0721786 0721789	10,80 € 10,80 €



**BRAKE  
MASTER CYLINDER HC³**

**CLUTCH  
MASTER CYLINDER HC³**





## SERVICE

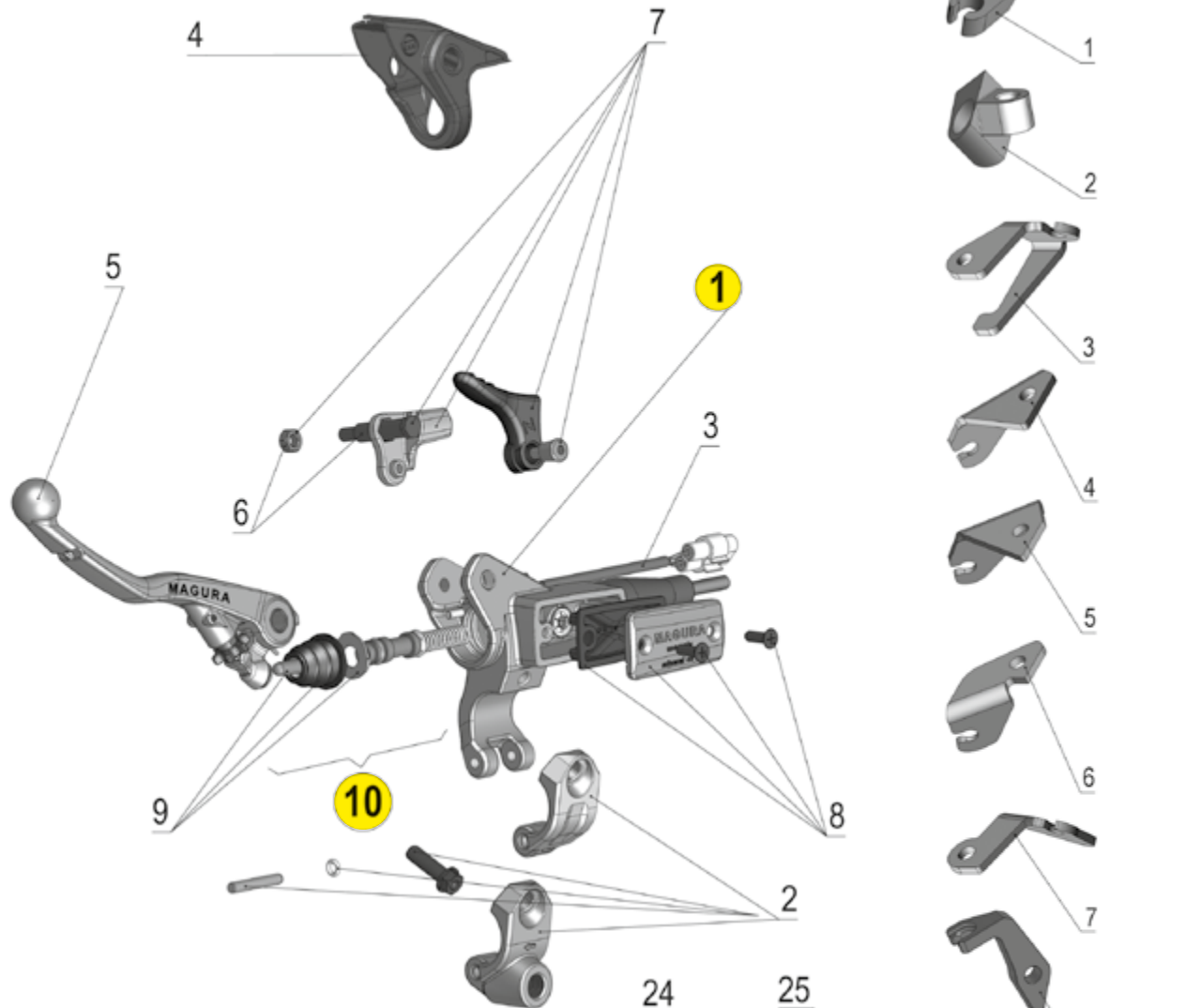
To obtain the full performance from your HC master you will need to return it to MAGURA or to a certified service partner to have it serviced. We recommend a service every 100,000 km or 10 years.



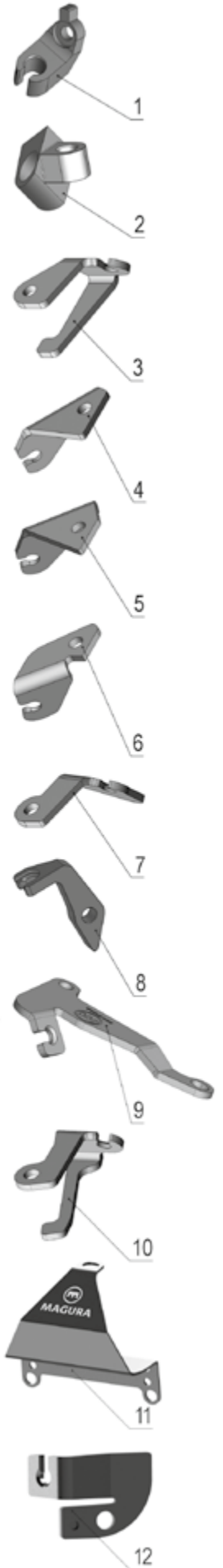
## HC<sup>3</sup> | OPTIONAL AND SPARE PARTS

POSITION	DESCRIPTION/APPLICATION	ORDER CODE	RRP
1	Folding Lever Blade long L = 193 mm	2700493	128,75 €
	Folding Lever Blade short L = 165 mm Includes retaining bolt, nut, spring and ball	2700494	
2	Lever Base – Brake	2700496	206,00 €
	Lever Base – Clutch Includes reach adjust, bracket, piston activation rod, bellows and titanium lever securing bolt with self locking nut and o-ring	2700495	206,00 €
3	Clamp	2700484	77,25 €
	Mirror Clamp	2701393	77,25 €
	Mirror Clamp Gold M10 x 1,25	2700485	97,85 €
	Mirror Clamp Black M10 x 1,25 Includes 2 titanium clamp screws	2701392	97,85 €
4	Reservoir Connector Includes gasket washer	2700486	20,50 €
5	Reservoir Radial HC Brake 36 ml	2700488	41,20 €
	Reservoir Radial HC Brake 9 ml	2700490	41,20 €
	Reservoir Radial HC Clutch 9 ml DOT	2700491	41,20 €
	Reservoir Radial HC Clutch 9 ml Mineral Oil Suitable for use with HC <sup>1</sup> , HC <sup>3</sup> and Radial 195. Includes hose, security hose clamp (x2), retaining bracket and bolts.	2700492	41,20 €
6	Bleed Nipple Includes dust cover	0720527	8,30 €
7	Switch-Kit Brake	0722213	30,70 €
	Switch-Kit Clutch Includes retaining bolts	2700487	41,20 €
8	Banjo Connector M10 x 1	0721786	10,80 €
	Double Banjo Connector M10 x 1 Includes gasket washers	0721789	10,80 €
9	Remote Brake Lever Adjuster On the fly lever reach adjustment for race track use.	2700497	87,55 €
10	Radial Pressure Line Adapter Adapter converts banjo ring from axial to radial connection avoiding the requirement for a new brake or clutch pressure line. Suitable for brake and clutch applications Suitable for application with MAGURA HYMEC pressure lines	2700499	36,05 €

## 167 HYMEC MASTER CYLINDER

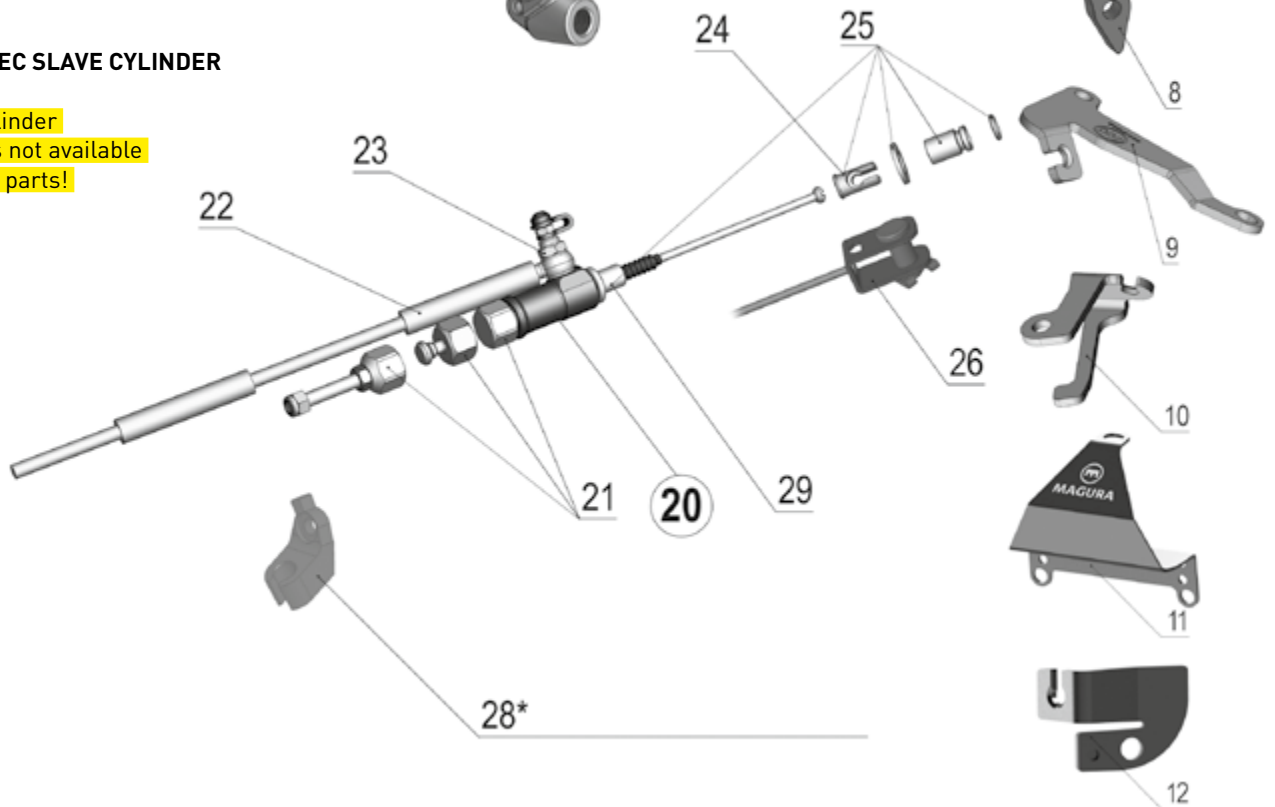


28\*:



## 167 HYMEC SLAVE CYLINDER

Slave cylinder  
seal-kits not available  
as spare parts!





## 167 HYMEC SPARE PARTS

POSITION	MODEL	ORDER CODE	RRP
1	Master cylinder*	Page 22/23	
	Clamp black	<b>2700176</b>	15,60 €
	Clamp black for threaded mirror mount M10 x 1.25 mm	<b>2700177</b>	20,80 €
2	Clamp black for threaded mirror mount M10 x 1.5mm (BMW F 800 HYMEC) All supplied with fitting pin and retaining bolt	<b>2700385</b>	20,55 €
	Clutch switch	<b>0723187</b>	41,60 €
3	Clutch switch BMW F 800 HYMEC	<b>2700384</b>	41,20 €
	Protection cover for lever without choke lever	<b>0723163</b>	10,90 €
4	Protection cover for lever with choke lever	<b>0723202</b>	10,90 €
	Lever Off-Road clutch silver long L = 146 mm	<b>0723290</b>	33,30 €
	Lever Off-Road clutch silver short L = 123 mm	<b>0723121</b>	33,30 €
5	Lever Street clutch black L = 163 mm	<b>0723296</b>	36,40 €
	Lever Street clutch silver L = 163 mm	<b>2700244</b>	36,40 €
6	Screw for lever without deco	<b>0723115</b>	5,15 €
	Deco lever black	<b>0723189</b>	17,65 €
7	Hot start lever red	<b>0723188</b>	17,65 €
	Reservoir cover for mineral oil use with bellow and screws	<b>2700501</b>	18,50 €
8	Reservoir cover for DOT use with bellow and screws	<b>2700215</b>	18,50 €
9	Bellows with push rod and washer	<b>0723116</b>	5,70 €
	Master piston-Ø 9,5 mm mineral oil	<b>0723184</b>	33,30 €
10	10,5 mm mineral oil	<b>0723185</b>	33,30 €
	12 mm mineral oil	<b>2700489</b>	36,05 €
20	Slave cylinder	Seite 28/29	
21	HYMEC slave rear cap kit includes STANDARD, REARMOUNT and REARMOUNT VARIO cap options	<b>2100018</b>	29,95 €
	Pressure line kit CARBON with accessories L = 1.120 mm	<b>0722137</b>	34,85 €
22	Pressure line kit CARBON with accessories L = 1.045 mm	<b>0722138</b>	34,85 €
	Pressure line kit ARAMID (cut to size) with accessories L = 1.500 mm	<b>0722679</b>	30,70 €
23	Banjo bolt with bleeding valve for carbon tubings M 6x16.5 mm	<b>0722136</b>	26,00 €
24	Nipple Adapter Kit includes 11 and 14 mm attachment nipple adapter	<b>2701674</b>	11,95 €
25	HYMEC- Slave attachment kit includes 12 and 15 mm 2-stroke adapter sleeve with o-ring, spacer washer and nipple adapter.	<b>2701697</b>	26,95 €
26	Clutch activation arm adapter (suitable for Suzuki motorcycles)	<b>2701695</b>	34,95 €
	1. Mounting adapter Suzuki RM-Z 250, Model year 2004-2008	<b>2701682</b>	44,95 €
	1. Mounting adapter Kawasaki KXF 250, Model year 2004-2008	<b>2701682</b>	44,95 €
	2. Mounting adapter Honda CRF 450 R, Model year 2004	<b>2701681</b>	44,95 €
	3. Mounting adapter Kawasaki KX 450 F, Model year 2006	<b>2701685</b>	29,95 €
	4. Mounting adapter Honda CRF 450 R, Model year 2004-2009	<b>2701686</b>	29,95 €
	5. Mounting adapter Suzuki RM-Z 250, ab Model year 2009	<b>2701683</b>	29,95 €
28	6. Mounting adapter Suzuki RM-Z 450, ab Model year 2009	<b>2701684</b>	29,95 €
	7. Mounting adapter Kawasaki KX 450 F, ab Model year 2009	<b>2701687</b>	44,95 €
	8. Mounting adapter Honda CRF 250 F, ab Model year 2014	<b>2701690</b>	29,95 €
	9. Mounting adapter Honda CRF 450 R, Model year 2015	<b>2701692</b>	29,95 €
	10. Mounting adapter Kawasaki KX 450 F, Model year 2015	<b>2701691</b>	29,95 €
	11. Slave Protection Kawasaki KX 450 R, ab Modeljahr 2016	<b>2701694</b>	44,95 €
	12. Mounting adapter Honda CRF 450 R, Model year 2017	<b>2701696</b>	29,95 €
	MAGURA-Blood 100 ml - F/NL	<b>2700818</b>	9,35 €
30	MAGURA-Blood 1 l - F/NL	<b>2700819</b>	45,75 €
	MAGURA-Blood 100 ml - D/E	<b>0721820</b>	9,35 €
	MAGURA-Blood 1l - D/E	<b>0721821</b>	45,75 €
31	Service-Kit HYMEC	<b>0722152</b>	22,65 €

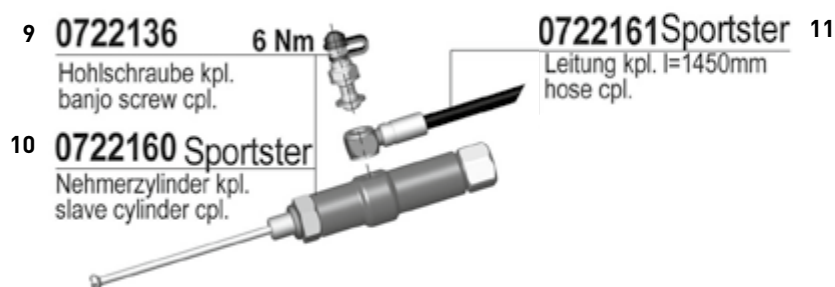
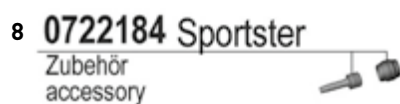
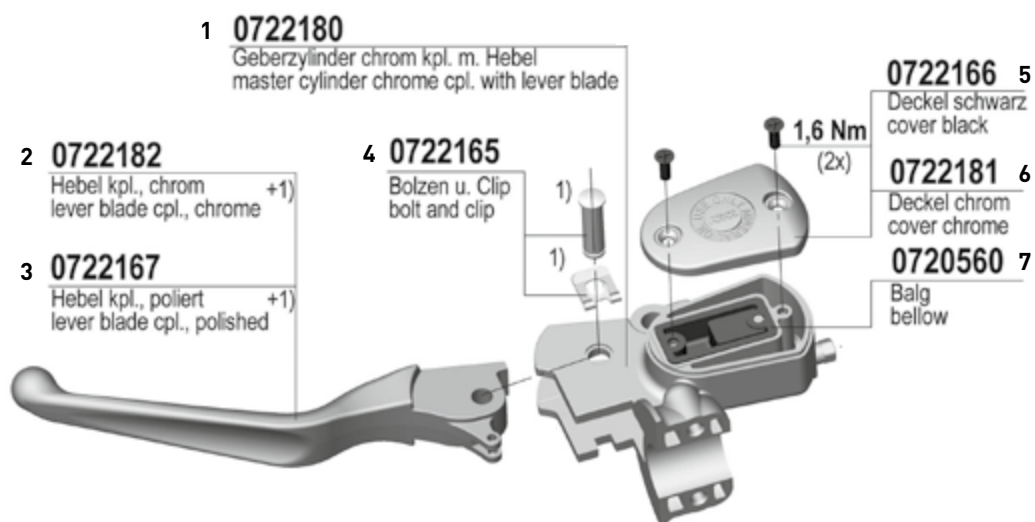
30



31



## HYMEC FOR HARLEY



POSITION	RRP
----------	-----

### HYMEC

1	307,45 € B
2	77,25 € B
3	41,20 € B
4	12,35 € B
5	22,65 € B
6	49,40 € B
7	7,25 €
8	8,50 € B
9	26,00 €
10	123,60 € B
11	46,35 € B

### RADIAL GEBERZYLINDER

1	9,35 €
2	34,30 €
3	34,30 €
4	34,30 €
5	12,95 €
6	12,95 €
7	6,20 €
8	12,45 €
9	14,55 €
10	33,30 €
11	33,30 €
12	33,30 €
13	33,30 €
14	33,30 €
15	33,30 €
16	33,30 €
17	20,80 €
18	30,70 €
19	31,20 €
20	10,80 €
21	84,25 €
22	17,15 €
23	12,45 €



## 195 RADIAL MASTER CYLINDER



3 + 5 + 6



2 0722177

Kurzhebel (150mm) silber f.  
 Ø 12 u. Ø 13  
 short lever blade silver f.  
 Ø 12 and Ø 13

3 0722202

Langhebel (175mm)  
 silber f.  
 16 u. Ø 20  
 long lever blade (175mm)  
 silver f.  
 16 and Ø 20

4 0722112

Langhebel (KUPPLUNG)  
 long lever (CLUTCH)

0722098 1

Einstellschraube  
 adjusting screw

5 2701677

Stutzen inkl.  
 O-Ring Mineralöl

6 2701678

Stutzen inkl.  
 O-Ring DOT

Bremsflüssigkeit  
 DOT 4 / 5.1  
 brake fluid  
 DOT 4 / 5.1

Mineralöl  
 mineral oil

0723234 10

Kolben kpl. f. Ø 12  
 piston cpl. f. Ø 12

0722110 11

Kolben kpl. f. Ø 13  
 piston cpl. f. Ø 13

0723025 12

Kolben kpl. f. Ø 11  
 piston cpl. f. Ø 11

0722211 13

Kolben kpl. f. Ø 12  
 piston cpl. f. Ø 12

0722210 14

Kolben kpl. f. Ø 13  
 piston cpl. f. Ø 13

0722209 15

Kolben kpl. f. Ø 16  
 piston cpl. f. Ø 16

0722208 16

Kolben kpl. f. Ø 20  
 piston cpl. f. Ø 20

0722100 17

Wippe kpl.  
 plate cpl.

0722213 18

Schalter kpl. (BREMSE)  
 switch cpl. (BRAKE)

0722102 19

Schalter kpl. (KUPPLUNG)  
 switch cpl. (CLUTCH)

0721786 20

Hohlschraube  
 hollow screw

0722146 21

Leitung kpl. mit  
 Anschlüssen  
 hose cpl. with  
 fittings

0722201 22

Spiegelscheibe  
 mirror mounting  
 bracket

0722219 23

Scheibe  
 mounting bracket

7 0722092

Hebelschraube kpl.  
 lever screw cpl.

5 Nm

0,2 Nm

2 Nm

8 0722214

Entl.-ventil  
 bleeding valve

9 0722090

Halter (KUPPLUNG)  
 bracket (CLUTCH)

## RESERVOIRS

POSITION	MODEL	DESCRIPTION/APPLICATION	ORDER CODE	RRP
1	195 Brake reservoir	16 ml flange mount for single calliper brake systems	2700786	36,50 €
2	195 Brake reservoir	36 ml remote mount for double calliper brake systems	2700488	41,20 €
3	195 Brake reservoir	9 ml remote mount for single calliper brake systems	2700490	41,20 €
4	195 Clutch reservoir	9 ml flange mount for mineral oil (compatible with HYMEC)	2700787	36,50 €
5	195 Clutch reservoir	9 ml remote mount for mineral oil	2700492	41,20 €
6	195 Clutch reservoir	9 ml remote mount for DOT	2700491	41,20 €

## 167 CLUTCH MASTER CYLINDER

5 **0723202**  
Schutzkappe  
protection cap

- 2700244** 1  
Extra lang kpl. l=163mm silber  
extra long cpl. l=163mm silver
- 0723296** 2  
Extra lang kpl. l=163mm schwarz  
extra long cpl. l=163mm black
- 0723121** 3  
Kurzhebel kpl. l=123mm  
short lever cpl. l=123mm
- 0723290** 4  
Langhebel kpl. l=146mm  
long lever cpl. l=146mm

- 0723188** 17  
Hebel kpl. (Heissstarthebel/rot)  
lever cpl. (lever for hot start/red)
- 0723189** 18  
Hebel kpl. (Dekohebel/schwarz)  
lever cpl. (deco lever/black)
- 0723187** 19  
Schalter kpl.  
(mit Stößel u. Schraube)  
switch cpl.  
(with ram and screw)
- 2700384** 20  
Schalter kpl.  
BMW-Stecker  
switch cpl.  
BMW connector

**0723115** 12  
Bundschrabe M5  
ohne Deko  
shouldered screw M5  
without deco

- 0723116** 6  
Balg (m. Druckstange u. Scheibe)  
bellows (with push rod and washer)
- 0723184** 7  
Kolben kpl.  $\varnothing$  9,5 Mineralöl  
piston cpl.  $\varnothing$  9,5 mineral oil
- 0723185** 8  
Kolben kpl.  $\varnothing$  10,5 Mineralöl  
piston cpl.  $\varnothing$  10,5 mineral oil
- 2700489** 9  
Kolben kpl.  $\varnothing$  12 Mineralöl  
piston cpl.  $\varnothing$  12 mineral oil
- 2700181** 10  
Kolben kpl.  $\varnothing$  9,5 DOT  
piston cpl.  $\varnothing$  9,5 DOT
- 2700182** 11  
Kolben kpl.  $\varnothing$  10,5 DOT  
piston cpl.  $\varnothing$  10,5 DOT

- 0723118 B** 13  
Schelle  
mounting bracket
- 2700176** 14  
Schelle schwarz  
mounting bracket black
- 0723183 B** 15  
Spiegelschelle  
mirror mounting bracket
- 2700177** 16  
Spiegelschelle schwarz  
mirror mounting bracket black

- 2700501** 21  
Deckel-Kit Mineralöl  
cap-kit mineral oil
- 2700215** 22  
Deckel-Kit DOT  
cap-kit DOT

## 167 BRAKE MASTER CYLINDER

1 **0723115**  
Bundschrabe M5  
shouldered screw M5

2 **0723114**  
Kappe  
cap

3 **0723123**  
Bremslichtschalter  
brake light switch

4 **0723119**  
Balg  
bellows

**0723073** 5  
Langhebel kpl. L=146mm  
long lever cpl. L=146mm

**0723292** 6  
Kurzhebel kpl. L=123mm  
short lever cpl. L=123mm

**0723116** 7  
Balg (m. Druckstange u. Scheibe)  
bellows (with push rod and washer)

**0723117** 8  
Kolben kpl.  $\varnothing$  9,5 DOT  
piston cpl.  $\varnothing$  9,5 DOT

**0723071** 9  
Kolben kpl.  $\varnothing$  12,0 DOT  
piston cpl.  $\varnothing$  12,0 DOT

**0723118** 10  
Schelle  
mounting bracket

## SPARE PARTS FOR 190 MASTER CYLINDER

POSITION	RRP
----------	-----

### CLUTCH MASTER CYLINDER

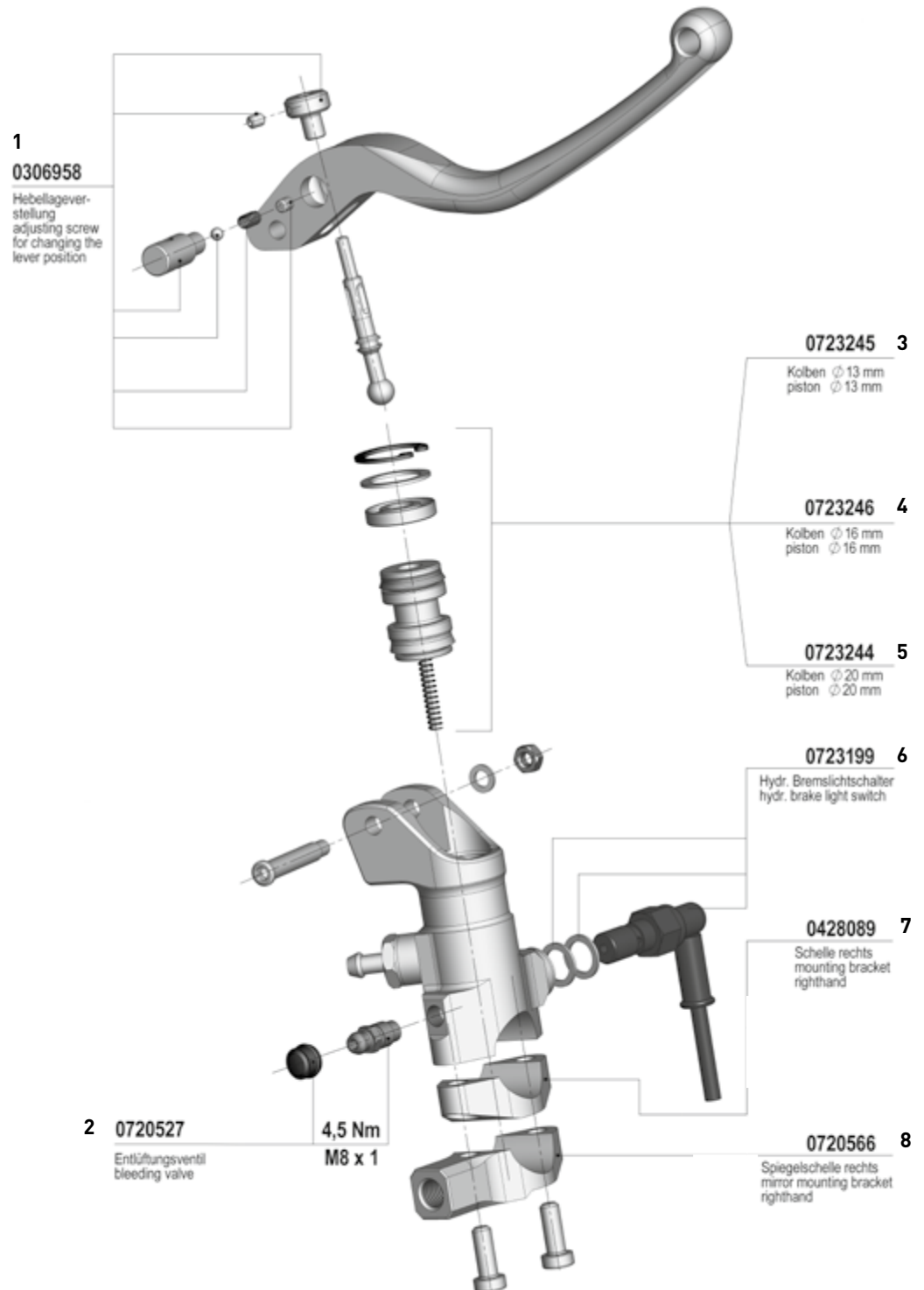
1	36,40 €
2	36,40 €
3	33,30 €
4	33,30 €
5	10,90 €
6	5,70 €
7	33,30 €
8	33,30 €
9	36,05 €
10	36,05 €
11	36,40 €
12	5,15 €
13	15,60 €
14	15,60 €
15	20,80 €
16	20,80 €
17	17,65 €
18	17,65 €
19	41,60 €
20	41,20 €
21	18,50 €
22	18,50 €

### BRAKE MASTER CYLINDER

1	5,15 €
2	16,75 €
3	34,30 €
4	10,25 €
5	39,50 €
6	33,30 € 
7	5,70 €
8	34,40 €
9	34,40 €
10	15,60 €

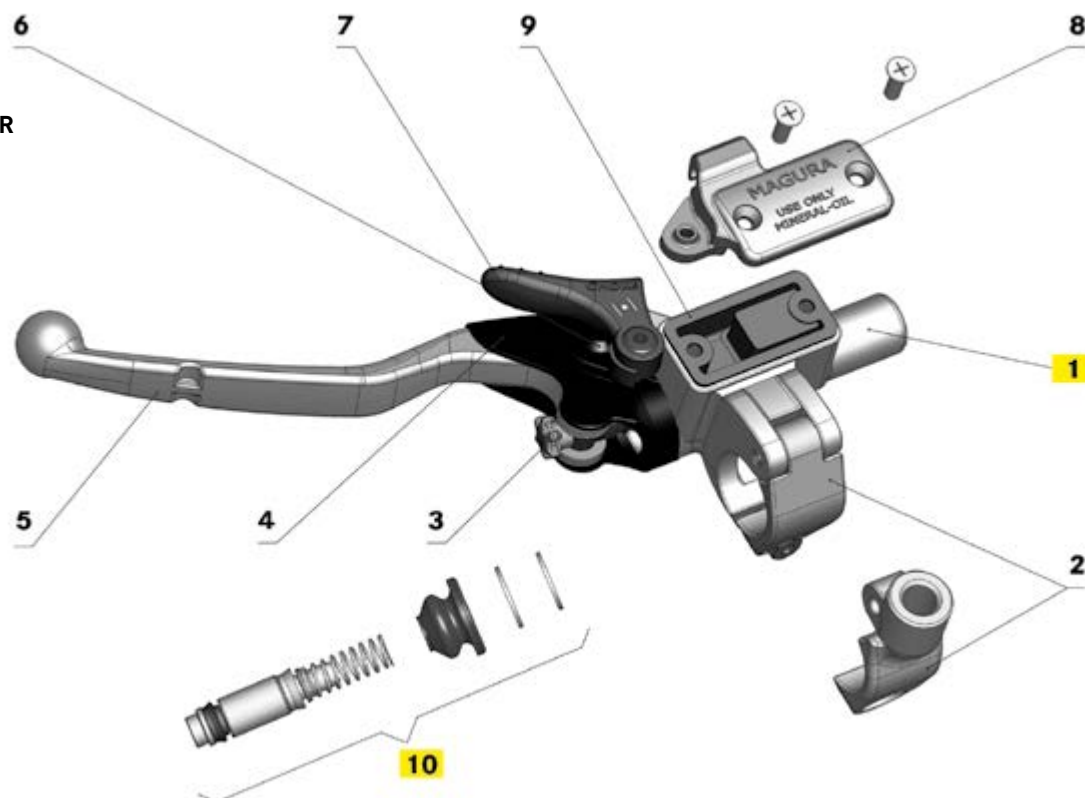
### RADIAL MASTER CYLINDER

1	41,60 €
2	8,30 €
3	96,75 €
4	96,75 €
5	96,75 €
6	30,15 €
7	69,70 €
8	72,80 €





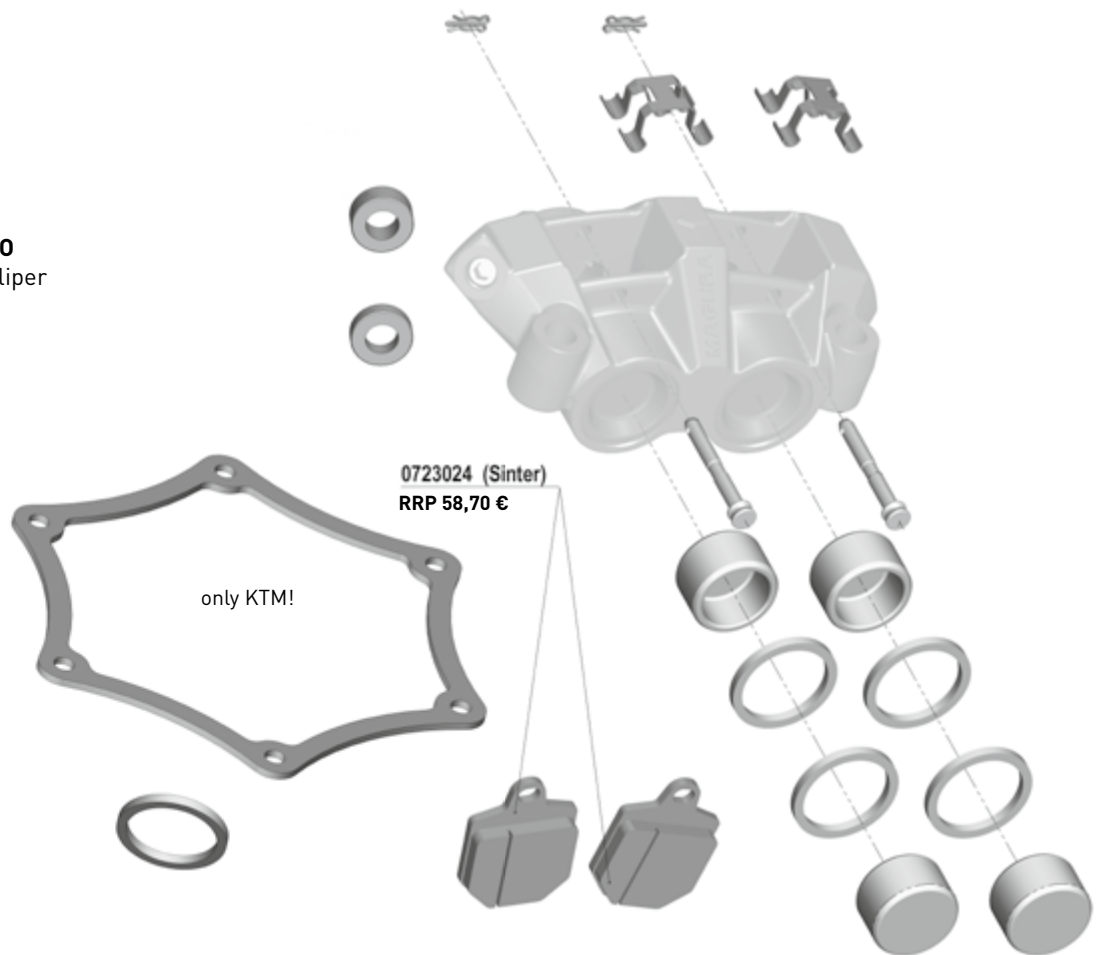
## 163 MASTER CYLINDER



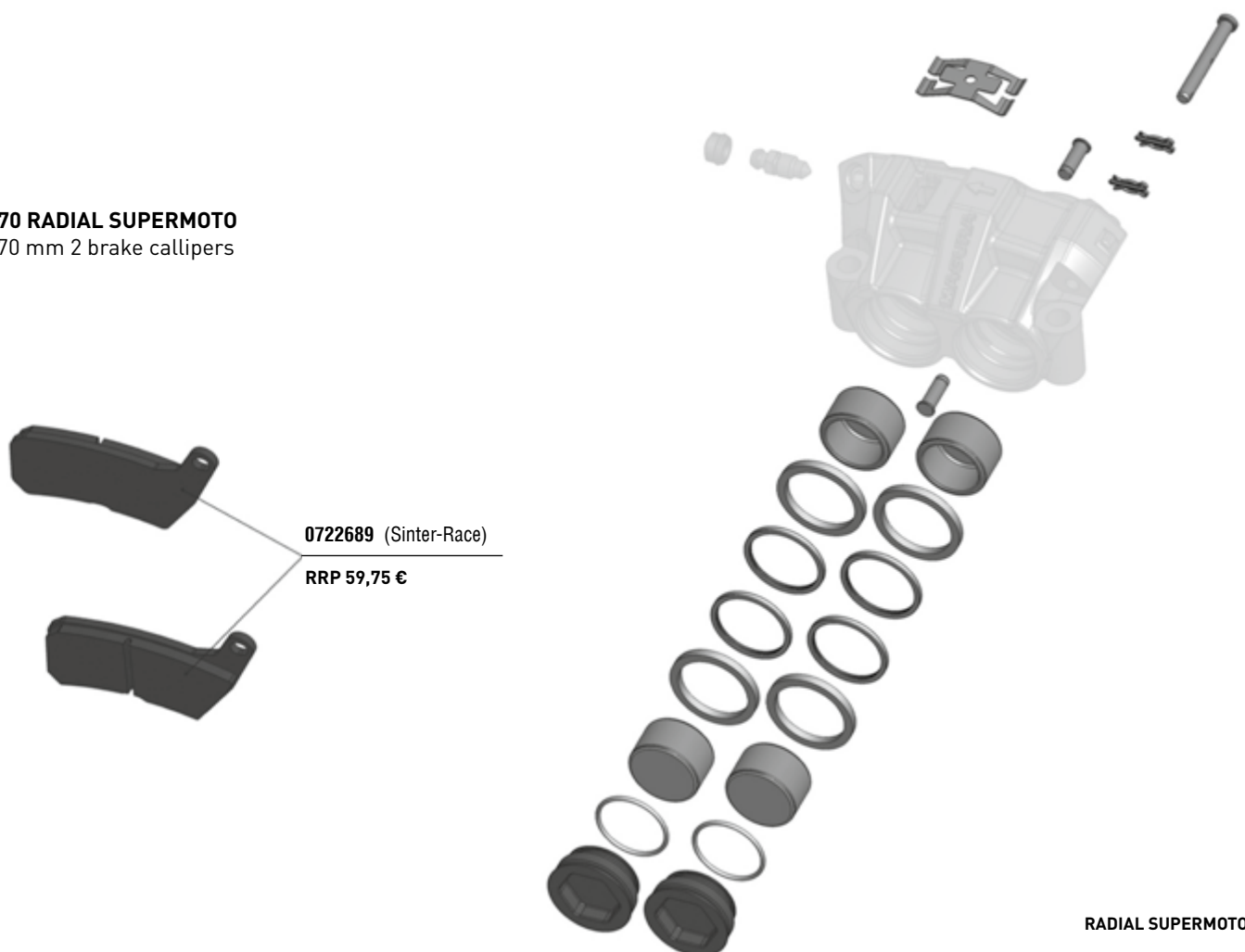
## 163 MASTER CYLINDER SPARE PARTS

POSITION	MODEL	ORDER CODE	RRP
1	Master cylinder - for replacement options see 167 master	Page 22/23	
2	Clamp with spiral spin	0720546	11,95 €
	Clamp for threaded mirror mounting M 10x1.25 mm	0720543	19,75 €
	Clamp schwarz for threaded mirror mounting M 10x1.25 mm	0722026 ☐	19,75 €
3	Adjuster wheel for lever, red (packaging unit 10 pcs.)	0720572	44,15 €
4	Protection cover for lever	2701680	9,25 €
5	Long lever blade with accessories and coil spring l = 147 mm	0720598	27,05 €
	Short lever blade with accessories and coil spring l = 123.5 mm	0720600	27,05 €
	Special lever blade f. master cylinders with bigger space l = 152 mm	0722021	29,10 €
6	Screw for lever	0720504 ☐	8,65 €
7	Deco lever black	0720552	8,30 €
	Choke lever black	0722118	9,35 €
	Choke lever red	0722312	9,35 €
8	Cover without deco-/choke lever	0720544	10,35 €
	Cover with thread for deco lever	0720553	17,65 €
	Cover with hole for deco lever	0720559	17,65 €
	Cover for choke lever	0722139	20,80 €
	Cover black without deco-/choke lever	0720500 ☐	12,45 €
9	Reservoir membrane for mineral oil	0720560	7,25 €
	Reservoir membrane for DOT	2701679	7,25 €
10	Master piston Ø		
	9,0mm Mineral oil	0722027	28,05 €
	9,5mm Mineral oil	0720555	28,05 €
	10,5mm Mineral oil	0720499	28,05 €
	9,5mm DOT	0723293	28,05 €
	10,5mm DOT	0720525	28,05 €

**750 RADIAL SUPERMOTO**  
320-330 mm 1 brake calliper



**770 RADIAL SUPERMOTO**  
270 mm 2 brake callipers



## HYDRAULIK ACCESSOIRES

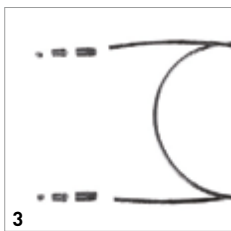
MODEL	DESCRIPTION/APPLICATION	ORDER CODE	RRP
<b>CARBON TUBINGS</b>			
Carbon tubing kit	For HYMEC, length 1,045 mm	<b>0722138</b>	34,85 €
Carbon tubing kit	For HYMEC, length 1,120 mm	<b>0722137</b>	34,85 €
Banjo bolt	With bleeding valve M 6x16.5 mm for HYMEC	<b>0722136</b>	26,00 €
<b>STEEL BRAIDED HOSES</b>			
Steel braided hose	For MAGURA Brake System 750.1, length 1,185 mm, DOT	<b>0722146</b>	84,25 €
1 Steel braided hose	Length 1,025 mm	<b>0722004</b>	52,00 €
2 Steel braided hose	KTM 4-Stroke Racing, length 975 mm	<b>0722005</b>	52,00 €
Steel braided hose	KTM LC8, length 1,140 mm	<b>0722015</b>	52,00 €
Steel braided hose	KTM LC4, length 1,025 mm	<b>0722016</b>	52,00 €
Steel braided hose	Husaberg, length 1,020 mm	<b>0722023</b>	52,00 €
Steel braided hose	KTM 250/380, length 970 mm	<b>0722057</b>	52,00 €
1 Steel braided hose	KTM 2-Stroke 125/200, length 970 mm	<b>2701665</b>	44,20 €
6 Banjo bolt	To fix the clutch tubing with thread M10x1, inclusive bleeding screw	<b>0720505</b>	16,60 €
5 Banjo bolt	For single brake line, without bleeding valve, M10 x1	<b>0721786</b>	10,80 €
Banjo bolt	For two line fittings, M10 x1	<b>0721789</b>	10,80 €
<b>PA-TUBINGS</b>			
4 PA-tubing kit	Length 1,025 mm	<b>0131890</b>	44,20 €
3 PA-tubing kit	With protection tube, length 1,045 mm	<b>0131893</b>	29,65 €
PA-tubing kit	KTM 65/85 SX, with protection tube, length 910 mm	<b>0131894</b>	24,45 €
PA-tubing kit	KTM 4-Stroke Racing, length 975 mm	<b>0720551</b>	53,55 €
PA-tubing kit	For HYMEC, length 1,500 mm, shortable	<b>0722679</b>	30,70 €
7 Olive/packing unit 10 pcs.	To fix the clutch tubing in the sleeve screw 0720548	<b>0720308</b>	20,50 €
Banjo bolt	For HYMEC-versions with PA-tubing	<b>0722136</b>	26,00 €
8 Hose Kit EPDM – Pack of 5	Extension hose for brake fluid use to connect a MAGURA brake fluid reservoir to our HC1 and HC3 radial master cylinders. Length 400 mm – pack includes 5 hoses.	<b>2701521</b>	31,00 €
<b>SERVICE-KITS</b>			
9 Service-Kit HYMEC	Contains everything you need to refill MAGURA's HYMEC	<b>0722152</b>	22,65 €
10 MAGURA-Blood 100 ml - F/NL	High quality hydraulic mineral based oil for HYMEC	<b>2700818</b>	9,35 €
10 MAGURA-Blood 1 l - F/NL	High quality hydraulic mineral based oil for HYMEC	<b>2700819</b>	45,75 €
10 MAGURA-Blood 100 ml - D/E	High quality hydraulic mineral based oil for HYMEC	<b>0721820</b>	9,35 €
10 MAGURA-Blood 1 l - D/E	High quality hydraulic mineral based oil for HYMEC	<b>0721821</b>	45,75 €
11 MAGURA Royal Blood 100 ml	High quality hydraulic mineral based oil for hydraulic clutch systems	<b>0721630</b>	6,50 €
11 MAGURA Royal Blood 1 l	High quality hydraulic mineral based oil for hydraulic clutch systems	<b>0721631</b>	33,50 €



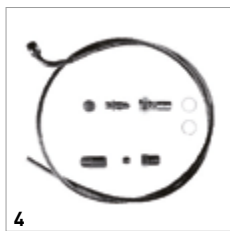
1



2



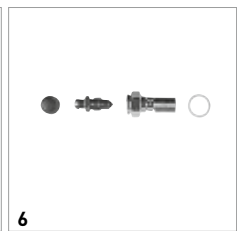
3



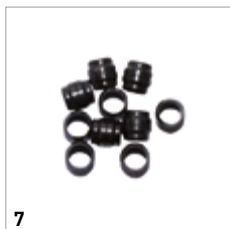
4



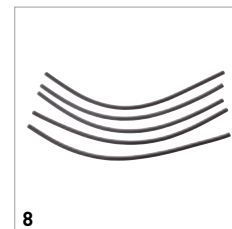
5



6



7



8



9



10



11



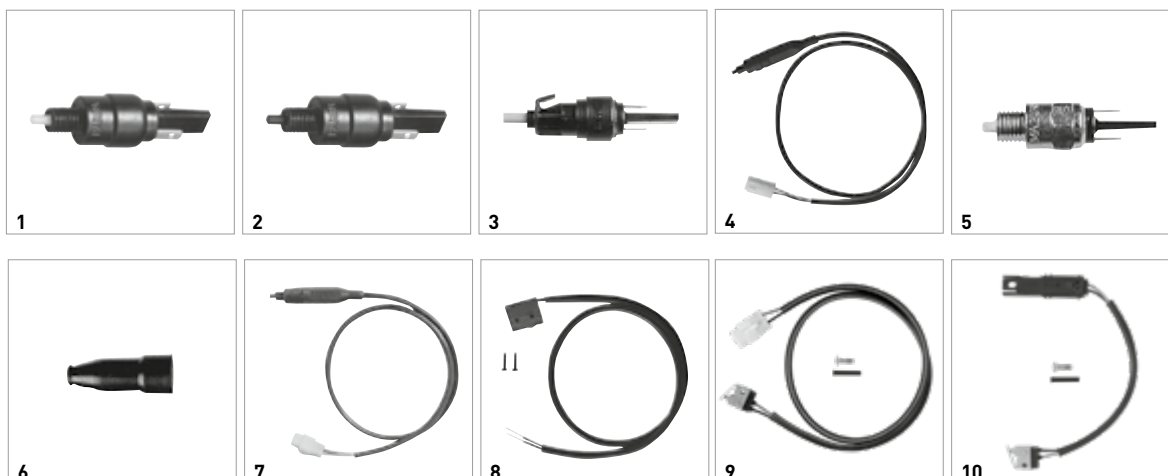


## MAGURA ANTIBUG: KEEPING YOUR VISION CLEAR

PIECE	DESCRIPTION/APPLICATION	ORDER CODE	RRP
1	With its new Antibug visor cleaning sponge, MAGURA has a chemical-free alternative to keep your helmet visor free from insects and dirt.	2701163	6,00 €

## SWITCHES

	MODEL	DESCRIPTION/APPLICATION	ORDER CODE	RRP
1	Switch 558.61	On in paused position, white pusher, micro-switch with spring, for thread 1/4"	0128496	10,95 €
2	Switch 558.12	Off in paused position, black pusher, for thread 1/4", start safety switch for MAGURA-model 163	0128500	10,95 €
3	Switch 558.51	On in paused position, pluggable, blue pusher, for MAGURA-models 116/117, for Suzuki and Simson scooters	0128510	10,95 €
4	Switch 163 B	For Yamaha XT 660 – HYMEC, cable length 620 mm	0306938	28,60 €
5	Switch 558.34	On in paused position, white pusher, for thread M 8x1	2701689	10,95 €
	Switch 701	Hydraulic brake light switch	0723199	30,15 €
6	Protection cover 558	For all switch models 558 small inner-Ø 3.6/ big inner-Ø 10.5	2701676	8,45 €
7	Clutch switch 163	KTM-models LC 4 from 2003 and LC 8, for thread 1/4", cable length 550 mm	0722014	25,45 €
8	Switch 195	For RADIAL 195 Clutch	0722102	31,20 €
9	Switch 195	For RADIAL 195 Brake, cable length 400 mm	0722213	30,70 €
10	Clutch switch 167	For MAGURA model 167 (Clutch)	0723187	41,60 €
11	Clutch switch 167	For BMW-HYMEC (Clutch)	2700384	41,20 €
	Brake light switch 167	For MAGURA model 167 (ATV-Brake), cable length 760 mm	0723197	40,05 €
	Brake light switch 167	For MAGURA model 167, cable length 400 mm	0723123	34,30 €



## GRIPS, PAIRS OF GRIPS



MODEL	DESCRIPTION/APPLICATION	LENGTH IN MM	ORDER CODE	RRP
1 150 sz*/151 sz* for tube-Ø 25/22	BMW/5-models and older	129	0720850	15,60 €
2 125 sz* for tube-Ø 25/22	For Oldies and especially for Trial	125	0720851	17,65 €
3 312 szw* for tube-Ø 25/22	Special grip for Off-Road	125	0720853	19,75 €
4 250 ksz* for tube-Ø 25/22	For mopeds with automatic engines	114	0720854	9,10 €
5 289 tsz* for tube-Ø 25/22	Our soft grip for street bikes	126	0720855	12,60 €
5 250 ksz* for tube-Ø 25, Wulst-Ø 48	including BMW C1	124	2701673	19,75 €
6 316 ksz* for tube-Ø 25/22	Mopeds with gear grip	116	0720856	9,10 €
7 DAB6 sz for tube-Ø 27,5	Oldie grip for Heinkel Scooter VE 10	116	0720920	13,50 €
8 DAB6 sz for tube-Ø 27,5	Oldie grip for Heinkel Scooter VE 10	121	2701492	55,00 €
9 125 sz* for tube-Ø 25/22	End open – for oldtimer motorcycles with reverse controls	125	2701489	44,30 €
10 306 sz* for tube-Ø 25/22	End closed	129	2701490	19,30 €
11 270 ksz* for tube-Ø 25/22	End closed – for oldtimer motorcycles	129	2701491	12,50 €

\*  
sz | rubber black  
szw | rubber black, soft  
ksz | fibre reinforced black  
tsz | thermoplastic  
elastomer, black

## SOLDERNIPPLE, SOLDER NIPPLE BARRELS






PACKING UNIT	DIMENSIONS IN MM			ORDER CODE	RRP
	Ø WIDTH	LENGTH	HOLE		
SOLDER NIPPLES BARREL					
10	9/8	15,5	2,5	2701504	20,94 €
10	10	11,6	2,3	2701505	36,05 €
SOLDER NIPPLES					
10	6/3,5	13	2,3	2701506	16,55 €
10	6/3,5	8	2,3	2701507	32,50 €
10	6/3,5	8	2,0	2701508	20,50 €

## NIPPLE ASSORTMENT









DESCRIPTION/APPLICATION	ORDER CODE	RRP
A well sorted selection of 100 various screw nipples, solder nipples and nipple barrels in a very comfortable plastic box. "A need in biker's garage!"	0736500	81,15 €




## SCREW NIPPLES

	PACKING UNIT	DIMENSIONS IN MM			ORDER CODE	RRP
		Ø WIDTH	LENGTH	HOLE		
	10	8	8,5	2,5	<b>2701509</b>	52,55 €
	10	6	9	2,5	<b>2701510</b>	52,55 €
	10	5	9,5	2	<b>2701511</b>	93,95 €
	10	8	15	2,3	<b>2701512</b>	52,55 €
	10	5	7,5	2	<b>2701513</b>	27,55 €

## ADJUSTING SCREWS

	PACKING UNIT	Ø WIDTH	DIMENSIONS IN MM		ORDER CODE	RRP	RRP
			LENGTH	HOLE			
<b>UNSLOTTED ADJUSTING SCREW, WITH KNURLED METAL NUT</b>							
	1	M 6	32	6,8	2,8	<b>2701515</b>	4,30 €
	1	M 6	41	6,1	2,5	<b>2701516</b>	6,95 €
	1	M6x0,75	31	6,5	3	<b>2701517</b>	1,68 €
	1	M 10x1	44	11	6,2	<b>2701523</b>	6,95 €
<b>SLOTTED ADJUSTING SCREW, WITH KNURLED METAL NUT</b>							
	1	M 7	42	6,5	3,5	<b>2701518</b>	8,85 €
	1	M 7	42	8,2	3,5	<b>2701519</b>	8,85 €
	1	M 6	32	6,5	2,2	<b>2701520</b>	8,85 €
	1	M10x1	44	11	2,4	<b>2701522</b>	6,95 €

	PACKING UNIT	DESCRIPTION/APPLICATION	ORDER CODE	RRP
	10	Cylinder bolt with shaft and thread M5 x 19.5, Bolt head Ø 9 mm with Philips H2 fitting, Shaft Ø 6 mm, shaft length 10.2mm, thread length 6 mm.	<b>2701514</b>	4,65 €



# MAG URA

TRUSTS  
IN SPECIALISTS



# LIQUI MOLY

MAGURA PLACES ITS TRUST IN STRONG PARTNERSHIPS, LIKE WITH LIQUI MOLY. THE LUBRICATION SPECIALISTS FROM ULM ARE THE FIRST CHOICE FOR MAGURA WHEN IT COMES TO PREMIUM OILS AND LUBRICANTS. ASK YOUR MAGURA DEALER WHICH LIQUI MOLY PRODUCTS ARE SUITABLE FOR YOUR MOTORCYCLE.



1



2



3



4



5



6



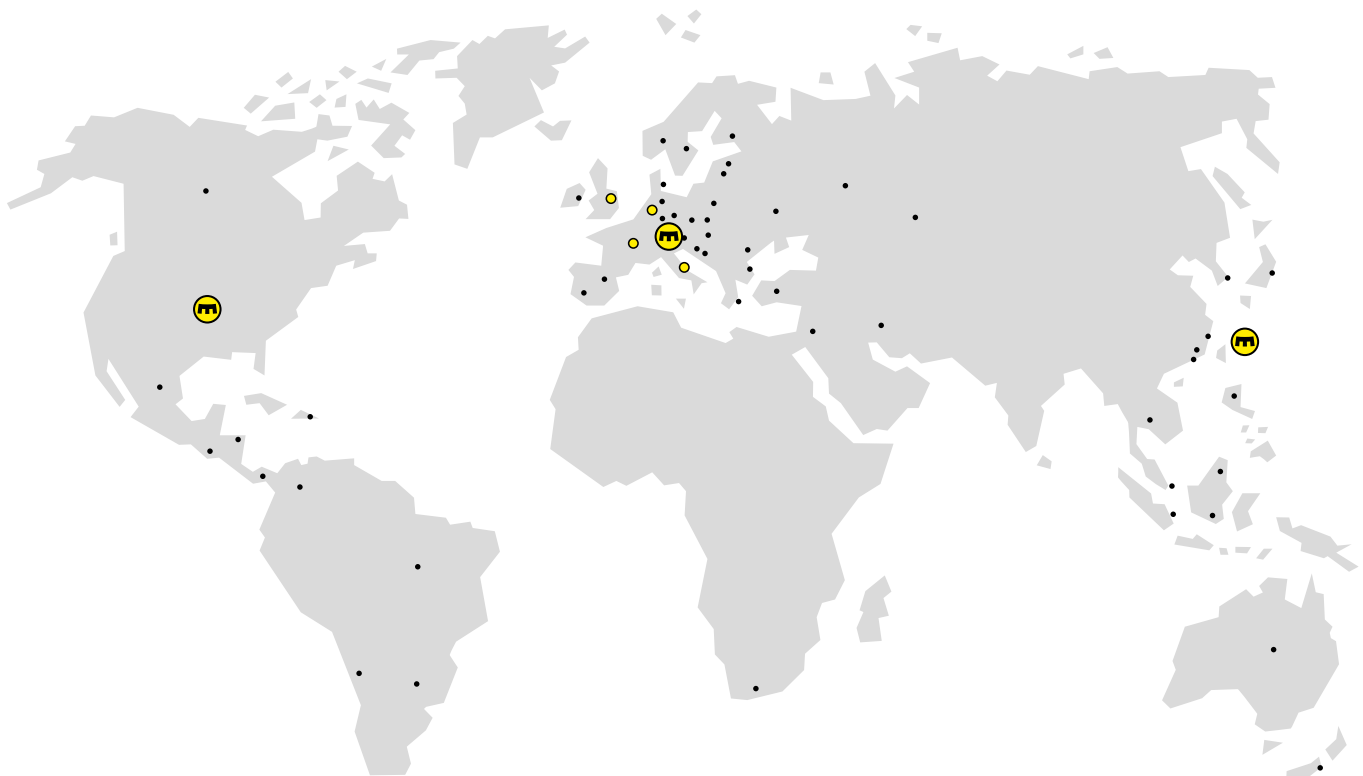
7



8

POSITION	DESCRIPTION/APPLICATION	ORDER CODE	RRP
1	Motorbike Cleaner, 1 l	2100566	12,29 €
2	Motorbike Chain Lube, 200 ml	2100811	6,09 €
	Motorbike Chain Lube, 400 ml	2100567	8,89 €
3	Motorbike Multispray, 50 ml	2100570	4,39 €
4	Motorbike Gloss Spray Wax, 400 ml	2100571	14,89 €
5	Brake Part Cleaner, 500 ml	0103661	7,19 €
6	Thread Lock High Strength, 10 g	2100572	5,09 €
7	Thread Lock Medium Strength, 10 g	2100573	5,09 €
8	Liquid Hand-Wash-Paste, 500 ml	2100574	9,98 €

# MAGURA NETWORK



Follow us:



[facebook.com/magurapassionpeople](https://facebook.com/magurapassionpeople)



[instagram.com/magura\\_official](https://instagram.com/magura_official)



**MAGURA**

MAGURA Bike Parts GmbH & Co. KG  
Eckisstraße 6 · D-72574 Bad Urach, Germany  
+49 (0)7125 969460 · [info@magura.de](mailto:info@magura.de) · [magura.com](http://magura.com)

© MAGURA, All rights reserved · Printed in Germany ·  
6.000 · 2 701 805 , 06/2018 · Features may be subject to change